

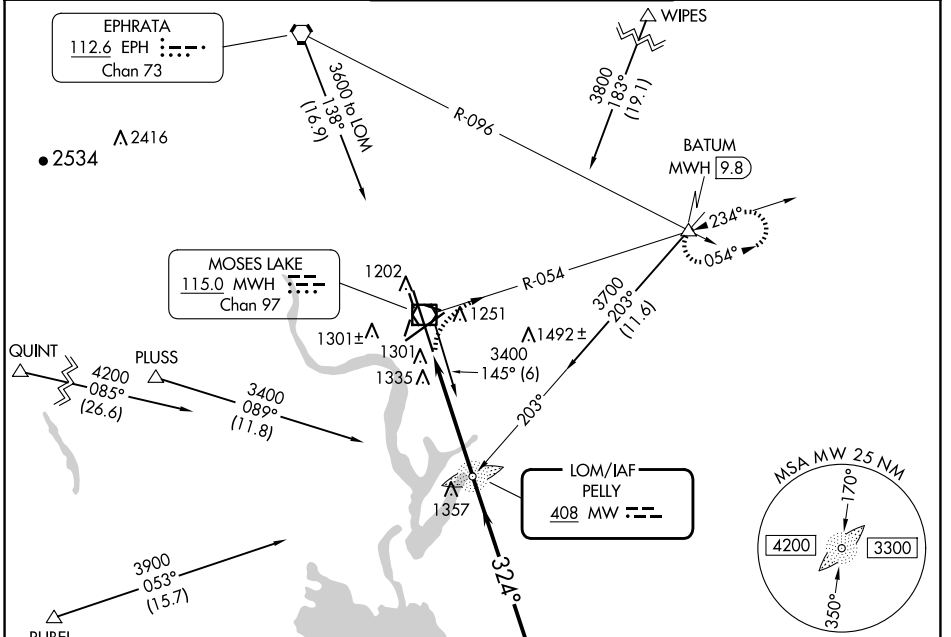
LOM MW 408	APP CRS 324°	Rwy Idg 13492
		TDZE 1167
		Apt Elev 1189

NDB RWY 32R

GRANT COUNTY INTL (MWH)

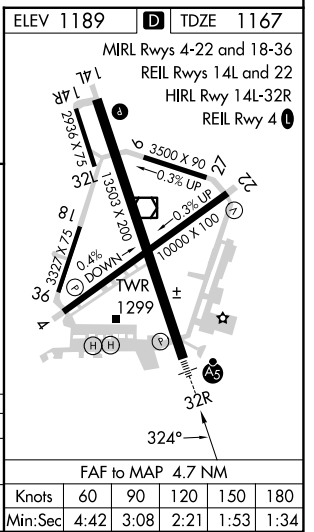
MALSR MISSED APPROACH: Climbing right turn to 4000 via MWH R-054 to BATUM INT/MWH 9.8 DME and hold.	
--	--

ATIS 119.05	GRANT COUNTY APP CON * 126.4 379.95	GRANT COUNTY TOWER * 118.25 (CTAF) 257.8 (EAST) 128.0 257.8 (WEST)	GND CON 121.9	UNICOM 122.95
-----------------------	---	--	-------------------------	-------------------------



NW-1, 23 JAN 2025 to 20 FEB 2025

NW-1, 23 JAN 2025 to 20 FEB 2025



4000 MWH R-054	BATUM △	MW LOM	Remain within 10 NM
		2800	
		2600	
		4.7 NM	

CATEGORY	A	B	C	D
S-32R	1680/40 513 (500-¾)		1680/50 513 (500-1)	1680-1½ 513 (500-1½)
CIRCLING	1680-1 491 (500-1)		1680-1½ 491 (500-1½)	1820-2 631 (700-2)

FAF to MAP 4.7 NM					
Knots	60	90	120	150	180
Min:Sec	4:42	3:08	2:21	1:53	1:34