

|  |                        |                             |   |
|--|------------------------|-----------------------------|---|
| WAAS<br>CH <b>86320</b><br><b>W22A</b> | APP CRS<br><b>222°</b> | Rwy Idg<br>TDZE<br>Apt Elev | <b>5004</b><br><b>334</b><br><b>338</b> |
|--|------------------------|-----------------------------|---|

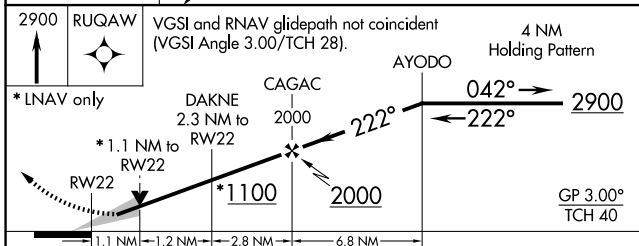
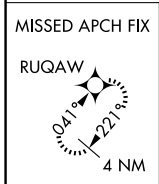
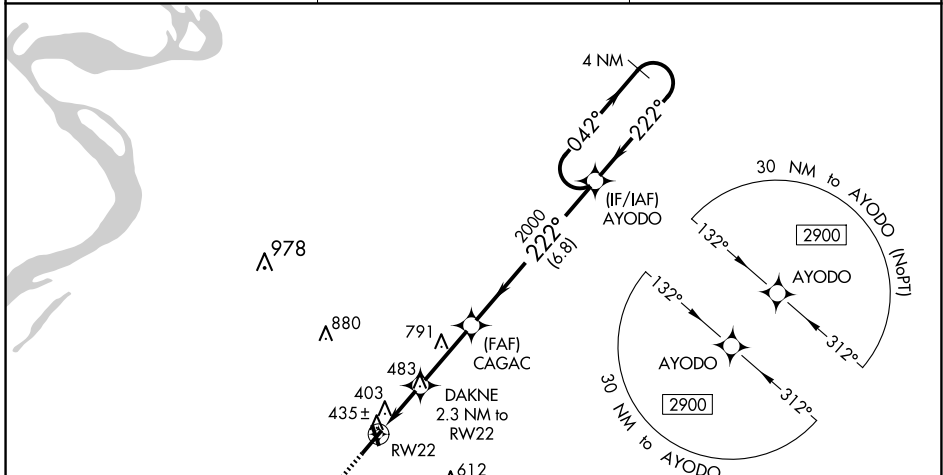
# RNAV (GPS) RWY 22

DYERSBURG RGNL (DYR)

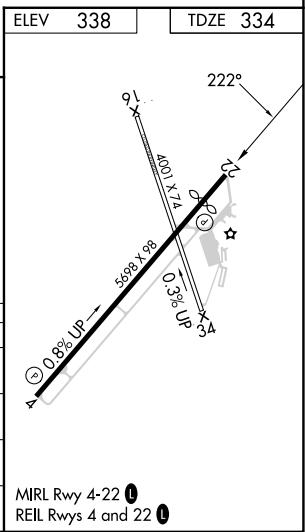
**▼** For uncompensated Baro-VNAV systems, LNAV/VNAV NA below -15°C (5°F) or above 54°C (130°F).  
**▲** Baro-VNAV and VDP NA when using Blytheville Muni altimeter setting. DME/DME RNP-0.3 NA.  
 When local altimeter setting not received, use Blytheville Muni altimeter setting: increase LPV DA to 644 feet, and LNAV/VNAV DA to 676 feet and all MDA 60 feet; increase LPV visibility all Cats 1/8 SM, and LNAV/VNAV visibility all Cats, LNAV Cats C/D visibility and Circling Cat C visibility 1/4 SM.  
 Night landing: Rwy 16, 34 NA.

**MISSED APPROACH:**  
 Climb to 2900 direct RUGAW and hold.

|                            |  |                                  |
|----------------------------|--|----------------------------------|
| AWOS-3PT<br><b>135.625</b> | MEMPHIS CENTER<br><b>134.65 316.15</b> | UNICOM<br><b>123.05 (CTAF) 0</b> |
|----------------------------|--|----------------------------------|



| CATEGORY     | A                    | B                    | C                     | D                      |
|--------------|----------------------|----------------------|-----------------------|------------------------|
| LPV DA       |                      | 584-7/8              | 250 (300-7/8)         |                        |
| LNAV/VNAV DA |                      | 616-7/8              | 282 (300-7/8)         |                        |
| LNAV MDA     |                      | 700-1                | 366 (400-1)           |                        |
| CIRCLING     | 740-1<br>402 (500-1) | 800-1<br>462 (500-1) | 1040-2<br>702 (800-2) | 1240-3<br>902 (1000-3) |



SE-1, 23 JAN 2025 to 20 FEB 2025

SE-1, 23 JAN 2025 to 20 FEB 2025