

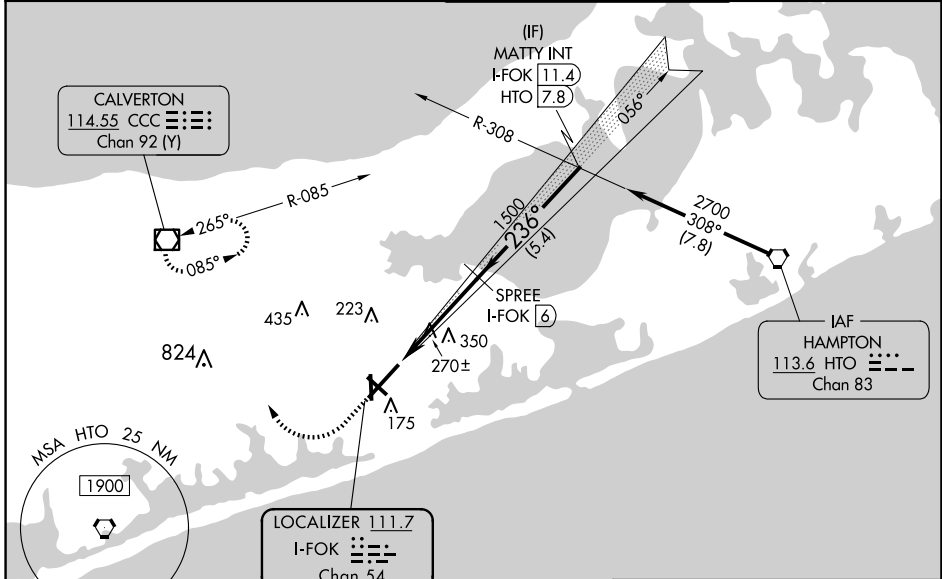
LOC/DME I-FOK 111.7 Chan 54	APP CRS 236°	Rwy Idg TDZE 66 Apt Elev 66	9002
---	------------------------	---	-------------

ILS or LOC RWY 24

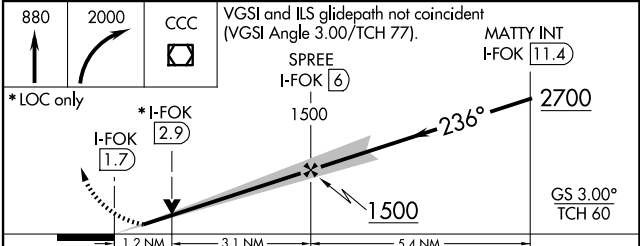
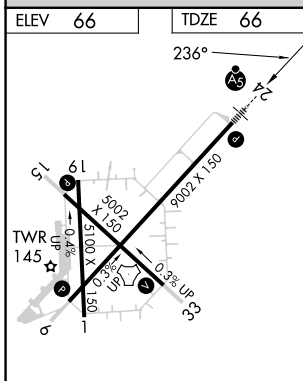
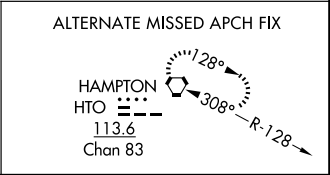
FRANCIS S GABRESKI (F'OK)

<p>Circling Rwy 15 NA at night.</p>	<p>MALS R</p>	<p>MISSED APPROACH: Climb to 880 then climbing right turn to 2000 direct CCC VOR/DME and hold.</p>	

ASOS 119.925	NEW YORK APP CON 125.975 343.65	SUFFOLK COUNTY TOWER ★ 125.3 (CTAF) 0 236.6	GND CON 121.8 225.4
------------------------	---	---	-------------------------------



DME required for LOC only.



ELEV 66	TDZE 66
HIRL Rwy 6-24	
MIRL Rwy 15-33	
REL Rwys 6, 15, and 33	
FAF to MAP 4.3 NM	
Knots	60 90 120 150 180
Min:Sec	4:18 2:52 2:09 1:43 1:26

CATEGORY	A	B	C	D
S-ILS 24	266-½ 200 (200-½)			
S-LOC 24	520-½ 454 (500-½)	520-¾ 454 (500-¾)		
<input checked="" type="checkbox"/> CIRCLING	600-1 534 (600-1)	620-1 554 (600-1)	700-1¾ 634 (700-1¾)	740-2¼ 674 (700-2¼)

NE-2, 23 JAN 2025 to 20 FEB 2025

NE-2, 23 JAN 2025 to 20 FEB 2025