


WAAS CH <b>40009</b> <b>W24A</b>	APP CRS <b>236°</b>	Rwy Idg TDZE Apt Elev	<b>9002</b> <b>66</b> <b>66</b>
--	------------------------	-----------------------------	---------------------------------------

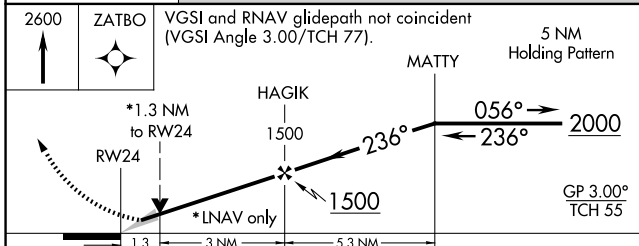
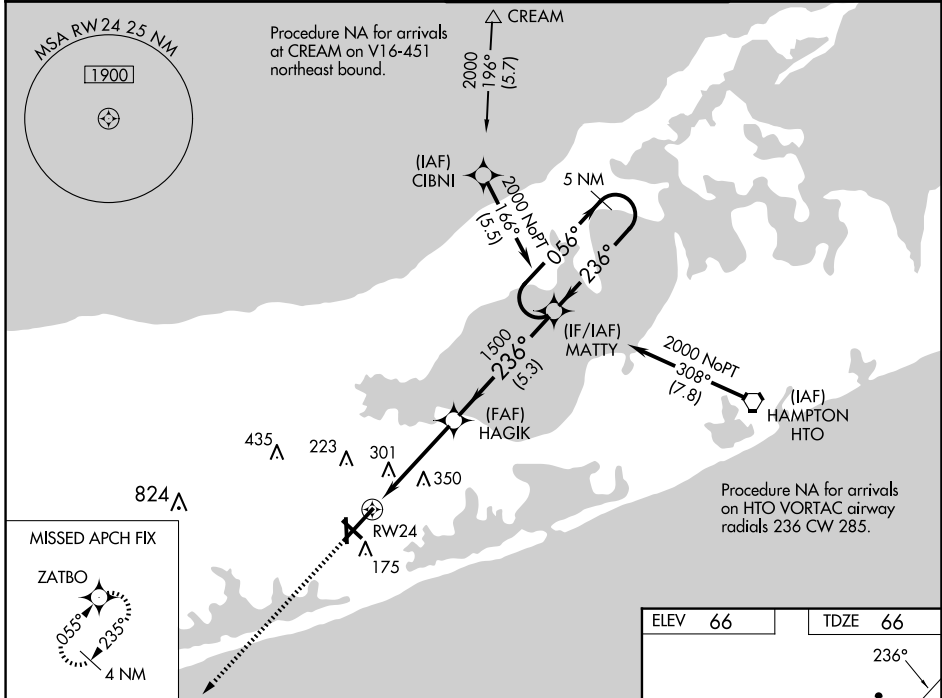
# RNAV (GPS) RWY 24

FRANCIS S GABRESKI (F'OK)

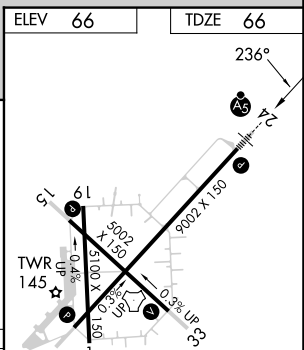
**⚠** For uncompensated Baro-VNAV systems, LNAV/VNAV NA below -15°C (5°F) or above 43°C (109°F). DME/DME RNP-0.3 NA. When local altimeter setting not received, use Shirley altimeter setting: increase LPV DA to 293 feet; increase LNAV/VNAV DA to 632 feet and all Cats visibility 1/8 SM; increase all MDAs 40 feet and Circling Cat C visibility 1/4 SM. Baro-VNAV and VDP NA when using Shirley altimeter setting. Circling Rwy 15 NA at night.

**MALS R**  
  
**MISSED APPROACH:**  
Climb to 2600 direct ZATBO and hold.

ASOS <b>119.925</b>	NEW YORK APP CON <b>125.975 343.65</b>	SUFFOLK COUNTY TOWER ★ <b>125.3 (CTAF) 0 236.6</b>	GND CON <b>121.8 225.4</b>
------------------------	---	---	-------------------------------



CATEGORY	A	B	C	D
LPV DA		266-1/2	200 (200-1/2)	
LNAV/VNAV DA		605-1 3/8	539 (600-1 3/8)	
LNAV MDA	560-1/2	494 (500-1/2)	560-1	494 (500-1)
CIRCLING	600-1 534 (600-1)	620-1 554 (600-1)	700-1 3/4 634 (700-1 3/4)	740-2 1/4 674 (700-2 1/4)



HIRL Rwy 6-24 **0**  
MIRL Rwy 15-33 **0**  
REIL Rwy 6, 15, and 33 **0**

NE-2, 23 JAN 2025 to 20 FEB 2025

NE-2, 23 JAN 2025 to 20 FEB 2025