

WAAS CH <b>81822</b> <b>W06A</b>	APP CRS <b>055°</b>	Rwy Idg TDZE Apt Elev	<b>9002</b> <b>57</b> <b>66</b>
--	------------------------	-----------------------------	---------------------------------------

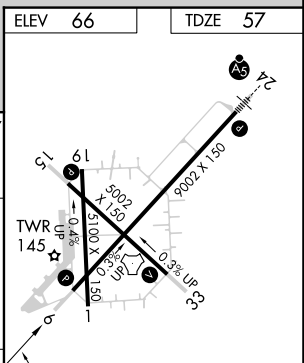
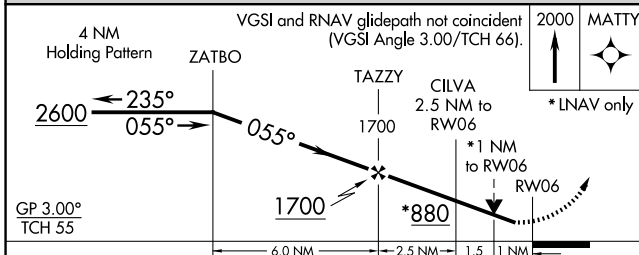
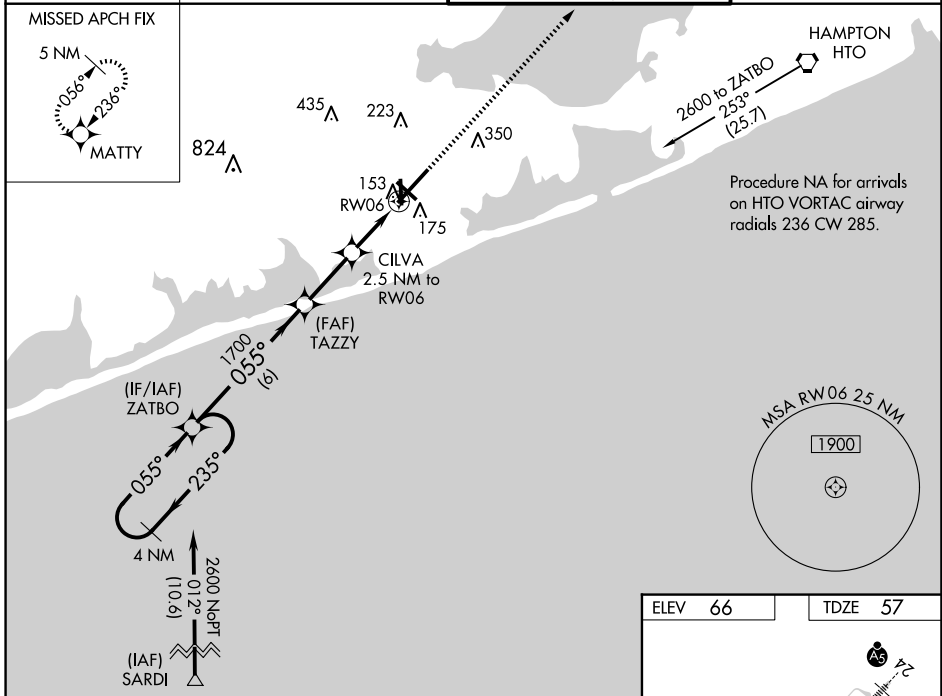
# RNAV (GPS) RWY 6

FRANCIS S GABRESKI (F'OK)

**⚠** Helicopter visibility reduction below ¾ SM not authorized. For uncompensated Baro-VNAV systems, LNAV/VNAV NA below -15°C (5°F) or above 43°C (109°F). DME/DME RNP-0.3 NA. When local altimeter setting not received, use Shirley altimeter setting: increase LPV DA to 325 feet and all Cats visibility ½ SM; increase LNAV/VNAV DA to 361 feet and all Cats visibility ½ SM; increase all MDAs 40 feet and LNAV Cats C/D visibility ½ SM and Circling Cat C visibility ¼ SM. Baro-VNAV and VDP NA when using Shirley altimeter setting. Circling Rwy 15 NA at night.

**MISSED APPROACH:**  
Climb to 2000 direct MATTY and hold.

ASOS <b>119.925</b>	NEW YORK APP CON <b>125.975 343.65</b>	SUFFOLK COUNTY TOWER * <b>125.3 (CTAF) 0 236.6</b>	GND CON <b>121.8 225.4</b>
------------------------	---	---	-------------------------------



CATEGORY	A	B	C	D
LPV DA		307-¾	250 (300-¾)	
LNAV/VNAV DA		343-⅞	286 (300-⅞)	
LNAV MDA		420-1	363 (400-1)	
CIRCLING	600-1 534 (600-1)	620-1 554 (600-1)	700-1¾ 634 (700-1¾)	740-2¼ 674 (700-2¼)

ELEV 66 TDZE 57

HIRL Rwy 6-24 **1**  
MIRL Rwy 15-33 **1**  
REIL Rwy 6, 15, and 33 **1**

NE-2, 23 JAN 2025 to 20 FEB 2025

NE-2, 23 JAN 2025 to 20 FEB 2025