

WAAS CH 48924 W24A	APP CRS 239°	Rwy Idg TDZE Apt Elev	5100 1719 1720
--	------------------------	-----------------------------	---

RNAV (GPS) RWY 24

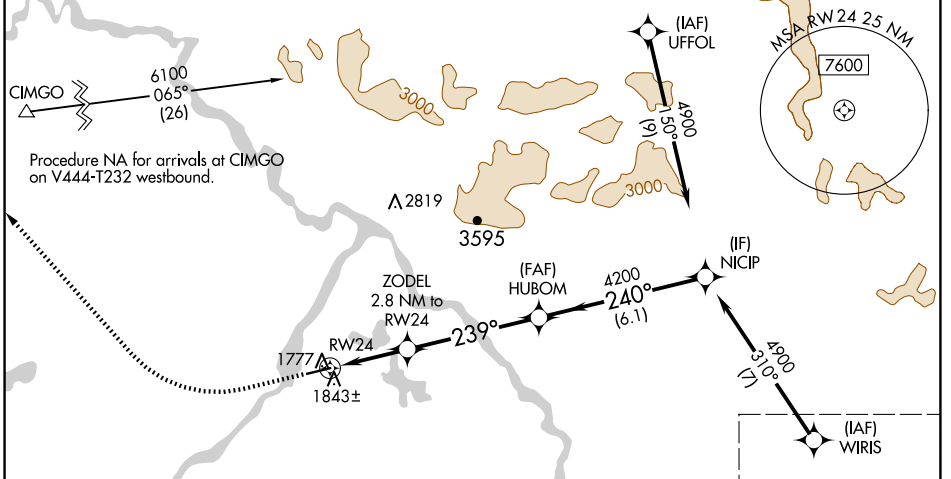
NORTHWAY (ORT)(PAOR)

RNP APCH - GPS.

MISSED APPROACH: Climb to 2300 then climbing right turn to 7400 direct CIMGO and hold, continue climb-in-hold to 7400.

For uncompensated Baro-VNAV systems, LNAV/VNAV NA below -24°C or above 54°C.
-37°C

ASOS 135.4	ANCHORAGE CENTER 126.55 323.0	NORTHWAY RADIO 123.6 (CTAF) 0
----------------------	---	---

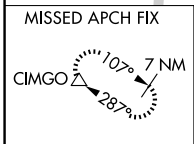


ROUTING TO WIRIS
(not to scale)

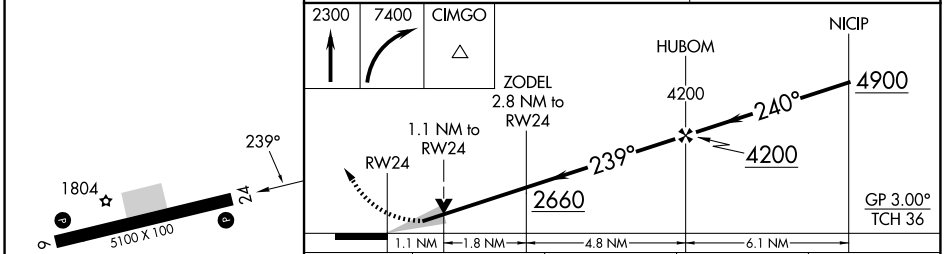
Procedure NA for arrivals at JUTBU on V456 southwest bound.

JUTBU → YEDNU → WIRIS (IF)

Procedure NA for arrivals at YEDNU on V444 and T372 southeast bound.



ELEV 1720	TDZE 1719
-----------	-----------



	Category	A	B	C	D
LPV	DA	1969-3/4 250 (300-3/4)			
LNAV/VNAV	DA	2004-7/8 285 (300-7/8)			
LNAV	MDA	2100-1	381 (400-1)	2100-1 1/8	381 (400-1 1/8)
CIRCLING		2160-1	2180-1	2240-1 1/2	2340-2
		440 (500-1)	460 (500-1)	520 (600-1 1/2)	620 (700-2)

AK, 26 DEC 2024 to 20 FEB 2025

AK, 26 DEC 2024 to 20 FEB 2025