

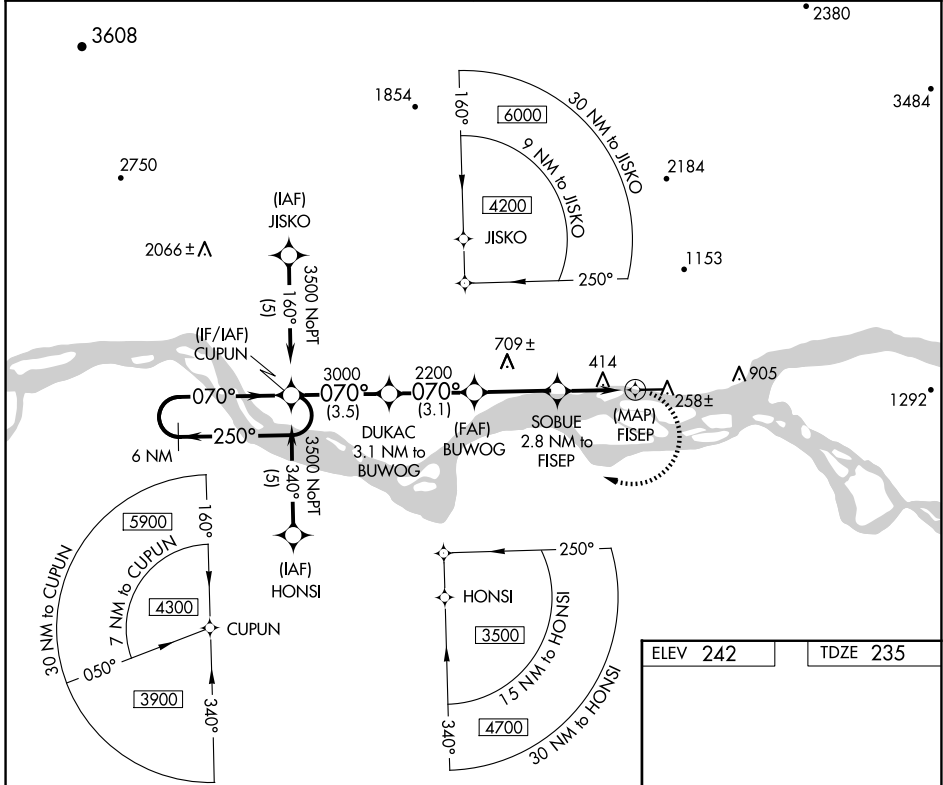
APP CRS	Rwy Idg	<b>4400</b>
<b>070°</b>	TDZE	<b>235</b>
	Apt Elev	<b>242</b>

# RNAV (GPS) RWY 7

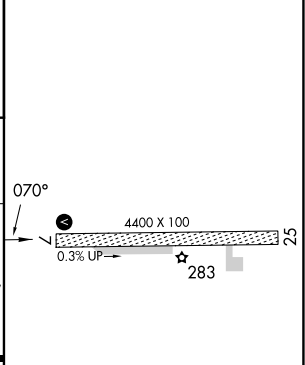
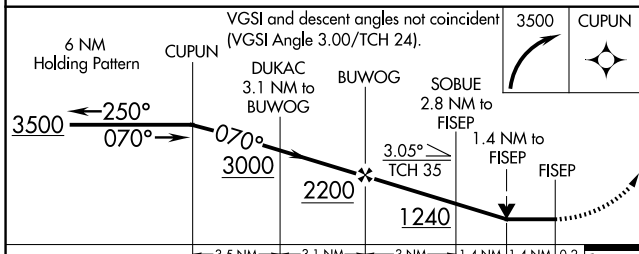
RALPH M CALHOUN MEML (TAL) (PATA)

RNP APCH-GPS.		MISSED APPROACH: Climbing right turn to 3500 direct CUPUN and hold.	
<p>▼ Circling NA north of Rwy 7-25.                  ▲ Rwy 7 helicopter visibility reduction below 3/4 SM NA.</p>			

ASOS <b>135.1</b>	ANCHORAGE CENTER <b>120.9 285.4</b>	FAIRBANKS RADIO <b>122.65</b>	CTAF <b>122.90</b>
----------------------	----------------------------------------	----------------------------------	-----------------------



ELEV 242	TDZE 235
----------	----------



CATEGORY	A	B	C	D
LNVA MDA	760-1 525 (600-1)		760-1 1/2 525 (600-1 1/2)	
CIRCLING	760-1 518 (600-1)		1260-3 1018 (1100-3)	

MIRL Rwy 7-25

AK, 26 DEC 2024 to 20 FEB 2025

AK, 26 DEC 2024 to 20 FEB 2025