

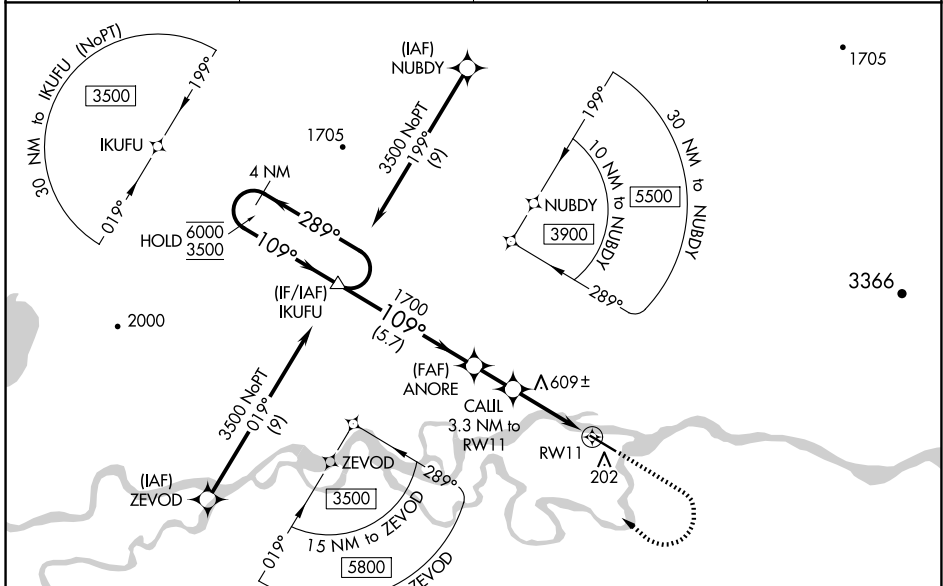
WAAS CH <b>45838</b> W11A	APP CRS <b>109°</b>	Rwy ldg TDZE <b>97</b> Apt Elev <b>97</b>
---------------------------------	------------------------	---

# RNAV (GPS) RWY 11

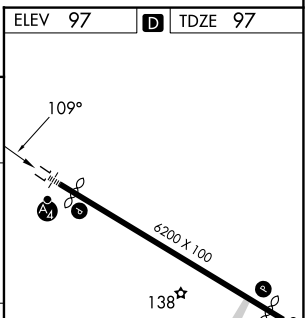
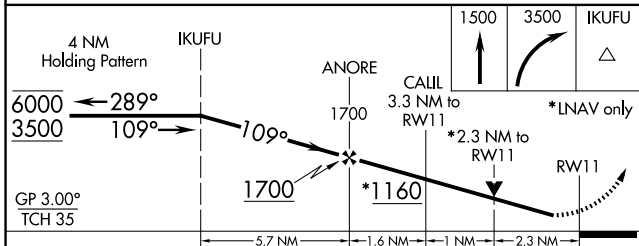
ANIAK (ANI)(PANI)

RNP APCH.	<p>⚠ Circling NA north of Rwy 11-29. Rwy 11 helicopter visibility reduction below 3/4 SM NA. Inop table does not apply to LPV, LNAV/VNAV all Cats, LNAV Cat A. For uncompensated Baro-VNAV systems, LNAV/VNAV NA below -21°C or above 54°C. For inop ALS, increase LNAV Cat C/D visibility to 2 1/2 SM.</p>	<p>MALSF</p>	<p>MISSED APPROACH: Climb to 1500 then climbing right turn to 3500 direct IKUFU and hold, continue climb-in-hold to 3500.</p>
-----------	---	--------------	---

AWOS-3P <b>124.3</b>	ANCHORAGE CENTER <b>118.15 251.05</b>	CLNC DEL <b>118.15</b>	CTAF <b>122.1</b>
-------------------------	--	---------------------------	----------------------



ELEV 97	TDZE 97
---------	---------



CATEGORY	A	B	C	D
LPV DA		347-1	250 (300-1)	
LNAV/VNAV DA		994-4	897 (900-4)	
LNAV MDA	860-1	763 (800-1)	860-2	763 (800-2)
CIRCLING	860-1 763 (800-1)	860-1 1/4 763 (800-1 1/4)	860-2 1/2 763 (800-2 1/2)	1200-3 1103 (1200-3)

HIRL Rwy 11-29

AK, 26 DEC 2024 to 20 FEB 2025

AK, 26 DEC 2024 to 20 FEB 2025