

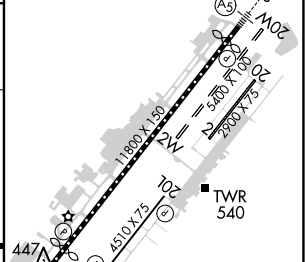
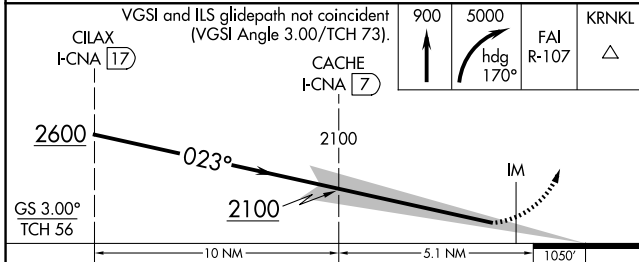
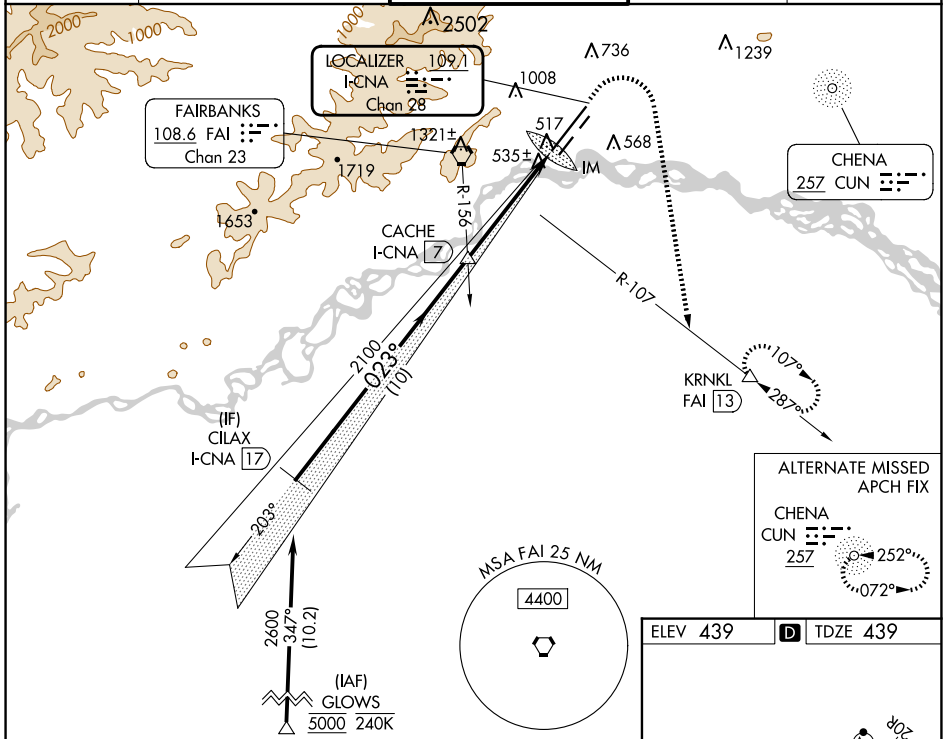
LOC/DME I-CNA 109.1 Chan 28	APP CRS 023°	Rwy Idg TDZE 439 Apt Elev 439	11050
---	------------------------	---	--------------

ILS RWY 2L (SA CAT I)

FAIRBANKS INTL (FAI) (PAFA)

RNP APCH - GPS. DME required.	ALSF-2	MISSED APPROACH: Climb to 900 then climbing right turn to 5000 on heading 170° and FAI VORTAC R-107 to KRNL/FAI 13 DME and hold, continue climb-in-hold to 5000.
Requires specific OPSPEC, MSPEC, or LOA approval.	(A)	
-29°C		

ATIS 124.4	FAIRBANKS APP CON 125.35 363.2	FAIRBANKS TOWER 118.3 257.8	GND CON 121.9	CLNC DEL 127.6
----------------------	--	---------------------------------------	-------------------------	--------------------------



CATEGORY	A	B	C	D
S-ILS 2L	RA 139/14 150 DA 589			

SA CATEGORY I ILS - SPECIAL AIRCREW & AIRCRAFT CERTIFICATION REQUIRED

AK, 26 DEC 2024 to 20 FEB 2025

AK, 26 DEC 2024 to 20 FEB 2025