

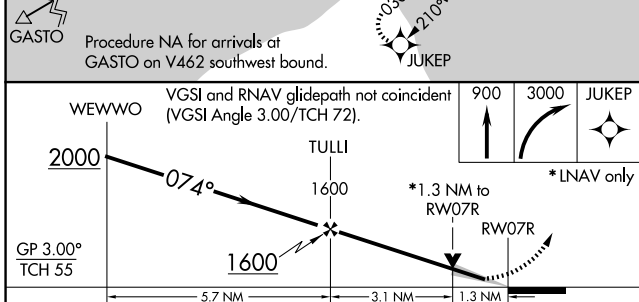
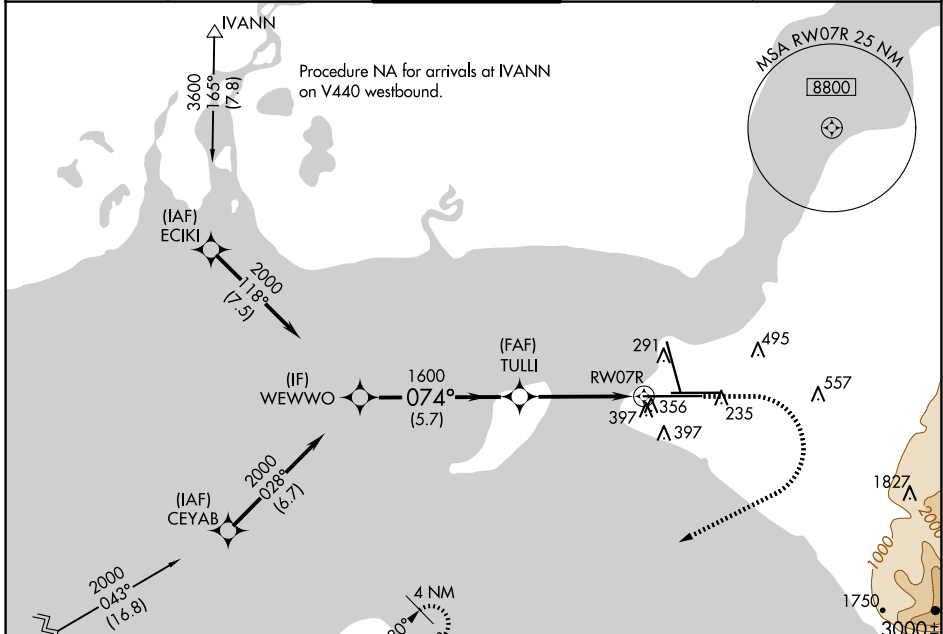
WAAS CH <b>81815</b> <b>W07A</b>	APP CRS <b>074°</b>	Rwy Idg <b>12400</b> TDZE <b>132</b> Apt Elev <b>151</b>
--	------------------------	--

# RNAV (GPS) Y RWY 7R

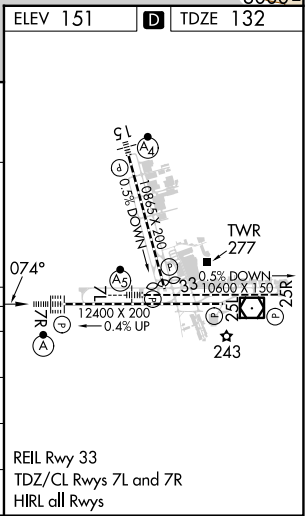
TED STEVENS ANCHORAGE INTL (ANC) (PANC)

RNP APCH.	ALSF-2	MISSED APPROACH: Climb to 900 then climbing right turn to 3000 direct JUKEP and hold.
<p>▼ For uncompensated Baro-VNAV systems, LNAV/VNAV NA below -18°C or above 54°C. For inop ALS, increase LNAV/VNAV all Cats and LNAV Cat C/D visibility to 1/2 SM.</p> <p>▲ -21°C</p>		

D-ATIS <b>135.5</b>	ANCHORAGE APP CON <b>118.6 290.5</b>	ANCHORAGE TOWER <b>118.3 257.8</b>	GND CON <b>121.9 338.25</b>	CLNC DEL <b>119.4 323.1</b>
------------------------	---	---------------------------------------	--------------------------------	--------------------------------



CATEGORY	A	B	C	D
LPV DA	332/18		200 (200-1/2)	
LNAV/VNAV DA	648/55		516 (500-1)	
LNAV MDA	620/24 488 (500-1/2)		620/50 488 (500-1)	
CIRCLING	700-1 549 (600-1)		800-1 3/4 649 (700-1 3/4) 920-2 1/2 769 (800-2 1/2)	



AK, 26 DEC 2024 to 20 FEB 2025

AK, 26 DEC 2024 to 20 FEB 2025