

# RNAV (GPS) RWY 20

BETTLES(BTT)(PABT)

APP CRS	Rwy Idg	<b>5190</b>
<b>191°</b>	TDZE	<b>647</b>
	Apt Elev	<b>647</b>

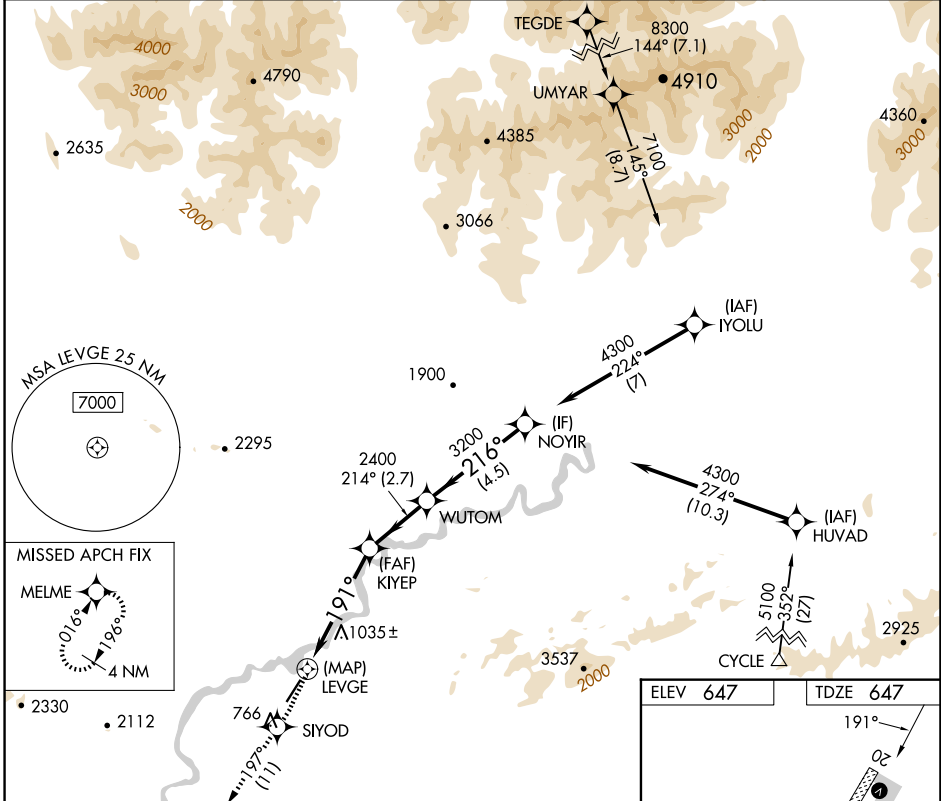
RNP APCH.

**⚠** Circling NA east of Rwy 2-20. Rwy 20 helicopter visibility reduction below 3/4 SM NA.

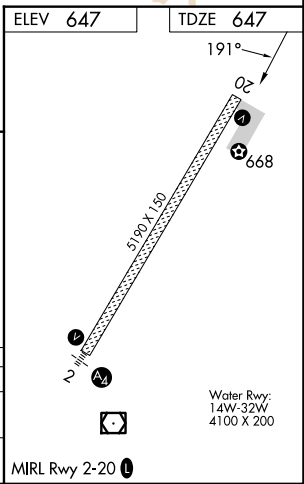
**❄** -44°C

MISSED APPROACH: Climb to 3200 direct SIYOD and on track 197° to MELME and hold.

ASOS <b>135.45</b>	ANCHORAGE CENTER <b>124.6 352.0</b>	FAIRBANKS RADIO <b>122.2</b>	CTAF <b>122.9</b>
-----------------------	--	---------------------------------	----------------------



3200	SIYOD	tr 197°	MELME		
				NOYR	
		1.4 NM to LEVGE	≤ 3.00°	214°	216°
		LEVGE	TCH 52	2400	4300
				WUTOM	
	0.4	1.4 NM	3.5 NM	2.7 NM	4.5 NM
CATEGORY	A	B	C	D	
LNVA MDA	1300-1	653 (700-1)	1300-1 7/8	653 (700-1 7/8)	
<b>C</b> CIRCLING	1300-1	653 (700-1)	1320-2	1320-2 1/4	673 (700-2 1/4)



AK, 26 DEC 2024 to 20 FEB 2025

AK, 26 DEC 2024 to 20 FEB 2025