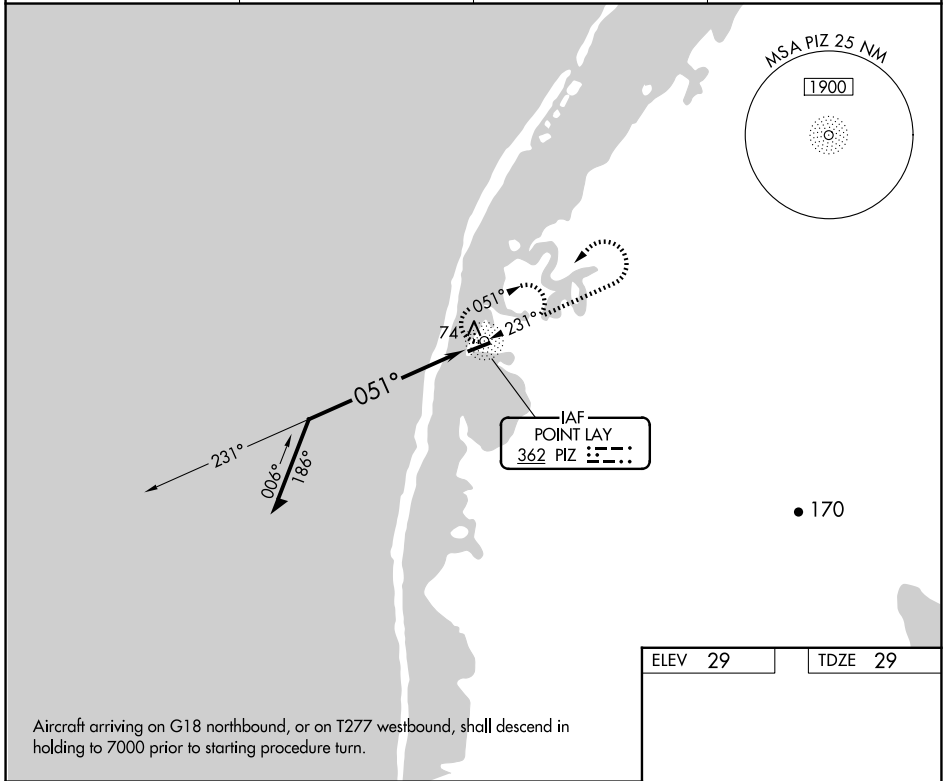


NDB PIZ 362	APP CRS 051°	Rwy Idg 4500 TDZE 29 Apt Elev 29
-----------------------	------------------------	---

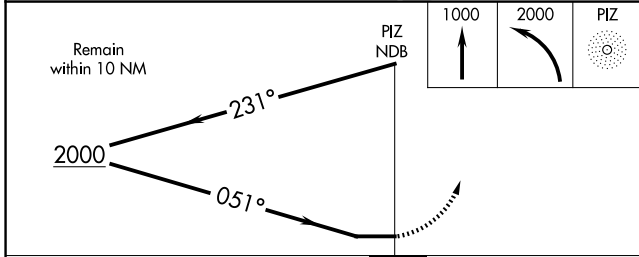
NDB RWY 5
POINT LAY LRRS (PIZ) (PPIZ)

-33°C		MISSED APPROACH: Climb to 1000, then climbing left turn to 2000 direct PIZ NDB and hold.	
AWOS-3P 135.65	ANCHORAGE CENTER 119.65 363.25	BARROW RADIO 122.4	CTAF 122.8



AK, 26 DEC 2024 to 20 FEB 2025

AK, 26 DEC 2024 to 20 FEB 2025



ELEV 29	TDZE 29
---------	---------

MIRL Rwy 5-23
REIL Rlys 5 and 23

CATEGORY	A	B	C	D
S-5	500-1 471 (500-1)		500-1 1/4 471 (500-1 1/4)	NA
CIRCLING	500-1 471 (500-1)		500-1 1/2 471 (500-1 1/2)	NA