

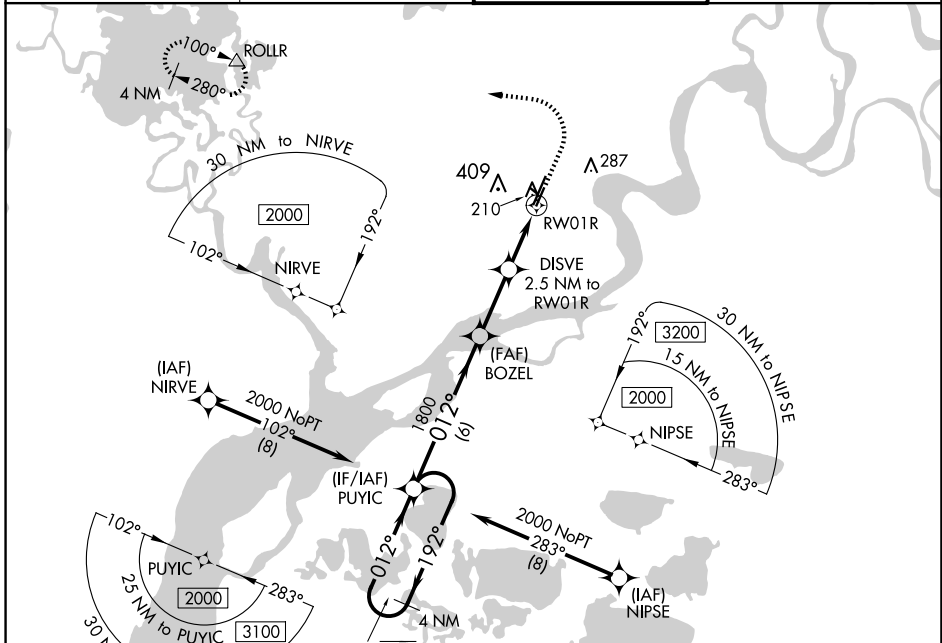
WAAS CH <b>81940</b> <b>W01B</b>	APP CRS <b>012°</b>	Rwy Idg <b>4000</b> TDZE <b>124</b> Apt Elev <b>129</b>
--	------------------------	---

# RNAV (GPS) RWY 1R

BETHEL (BET)(PABE)

RNP APCH.	MISSED APPROACH: Climb to 600 then climbing left turn to 2000 direct ROLLR and hold.
<p>⚠ Circling NA west of Rwy 1L-19R. For uncompensated Baro-VNAV systems, LNAV/VNAV NA below -18°C or above 54°C.</p>	

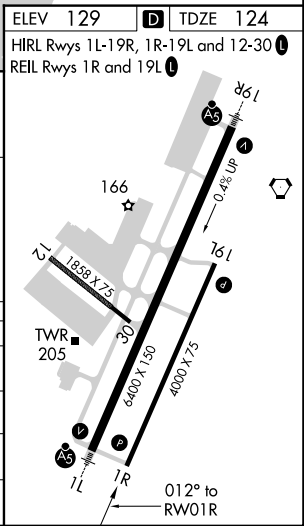
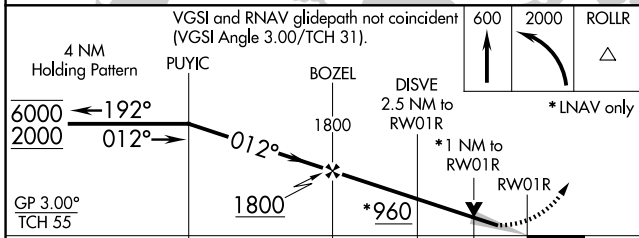
ATIS <b>119.8</b>	ANCHORAGE CENTER <b>125.2 372.0</b>	BETHEL TOWER ★ <b>118.7 (CTAF) 0</b>	GND CON <b>121.7</b>
----------------------	--	---	-------------------------



AK, 26 DEC 2024 to 20 FEB 2025

AK, 26 DEC 2024 to 20 FEB 2025

ELEV 129	TDZE 124
HIRL Rwys 1L-19R, 1R-19L and 12-30	
REIL Rwys 1R and 19L	



CATEGORY	A	B	C	D
LPV DA		374-3/4	250 (300-3/4)	
LNAV/ VNAV DA		374-3/4	250 (300-3/4)	
LNAV MDA		460-1	336 (400-1)	
<b>CIRCLING</b>	500-1 371 (400-1)	600-1 471 (500-1)	600-1 1/2 471 (500-1 1/2)	680-2 551 (600-2)