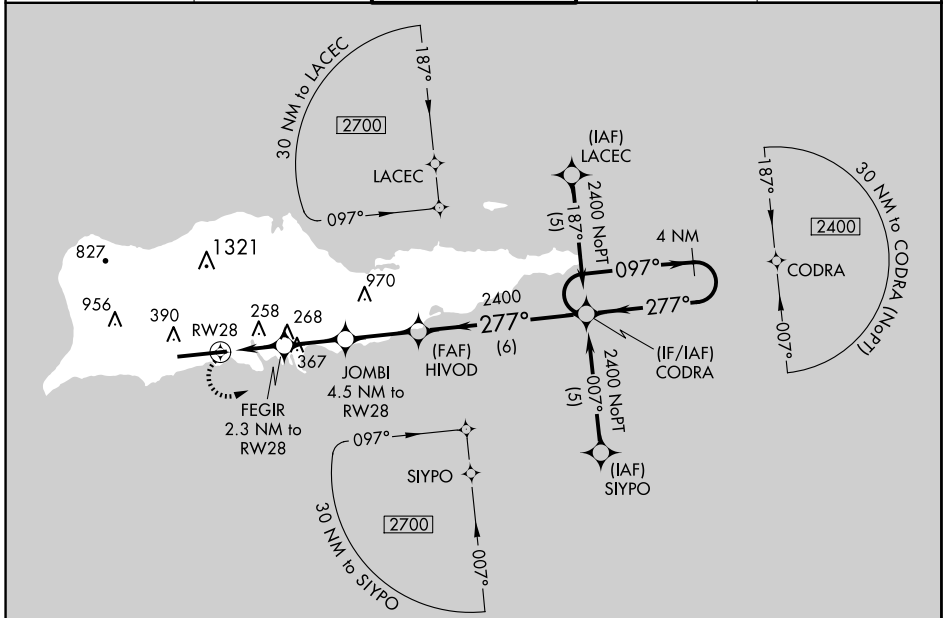


APP CRS 277°	Rwy Idg 9002
	TDZE 40
	Apt Elev 74

RNAV (GPS) RWY 28

HENRY E ROHLSSEN (STX)(TISX)

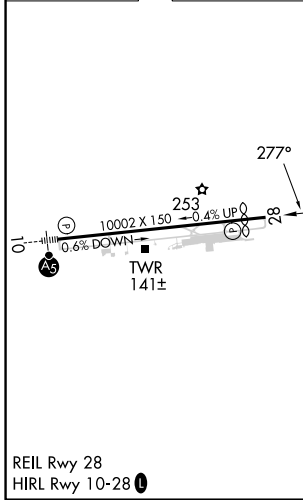
<p>⚠ Circling NA N of Rwy 10-28. DME/DME RNP-0.3 NA. Visibility reduction by helicopters NA. When local altimeter setting not received, procedure NA.</p>		<p>MISSED APPROACH: Climbing left turn to 2400 direct CODRA and hold.</p>	
<p>ATIS 135.65</p>	<p>SAN JUAN CENTER 128.65 279.6</p>	<p>ST. CROIX TOWER ★ 118.6(CTAF) 239.3</p>	<p>GND CON 121.7</p>
		<p>UNICOM 123.0</p>	



SE-3, 23 JAN 2025 to 20 FEB 2025

SE-3, 23 JAN 2025 to 20 FEB 2025

ELEV 74	TDZE 40
---------	---------



	2400	CODRA	JOMBI 4.5 NM to RWY 28	HIVOD	CODRA	4 NM Holding Pattern
			FEGIR 2.3 NM to RWY 28			
			RWY 28			
			1.4 NM to RWY 28			
			800			
			1520			
			3.06°			
			TCH 55			
			1.4	0.9	2.2	2.6
			6 NM			
			<p>VGSI and descent angles not coincident (VGSI Angle 3.00/TCH 80).</p>			
CATEGORY	A	B	C	D		
LNAV MDA	560-1	520 (500-1)	560-1½ 520 (500-1½)	560-1¾ 520 (500-1¾)		
CIRCLING	560-1 486 (500-1)	600-1 526 (600-1)	720-1¾ 646 (700-1¾)	720-2 646 (700-2)		