

VOR/DME MIE 114.4 Chan 91	APP CRS 143°	Rwy Idg 6500 TDZE 933 Apt Elev 937
---	------------------------	---

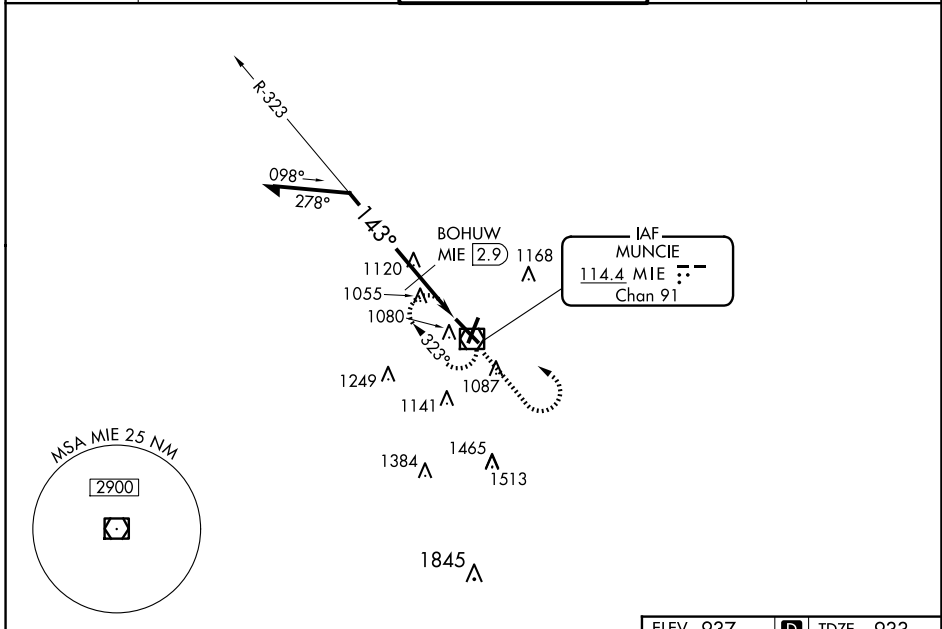
VOR RWY 14

DELAWARE COUNTY RGNL (MIE)

⚠ When local altimeter setting not received, use Fort Wayne Intl altimeter setting and increase all MDAs 140 feet; increase S-14 Cat C visibility ½ SM, Cat D ¼ SM; increase Circling Cat C/D visibility ½ SM. BOHUW fix minimums: increase S-14 Cat C visibility ½ SM, Cat D ¼ SM and Circling Cat C/D visibility ½ SM. VDP NA with Fort Wayne altimeter setting.

⚠ MISSED APPROACH: Climb to 2600 then left turn direct MIE VOR/DME and hold.

ATIS 133.25	INDIANAPOLIS APP CON 120.65 317.8	MUNCIE TOWER ★ 120.1 (CTAF) 0	GND CON 121.9	UNICOM 122.95
-----------------------	---	---	-------------------------	-------------------------



Remain within 10 NM BOHUW MIE 2.9 MIE VOR/DME 2600 *1480 0.8 1.3 0.8		ELEV 937 TDZE 933	MIE *1620 when using Fort Wayne Intl altimeter setting.	
CATEGORY	A	B	C	D
S-14	1480-1	547 (600-1)	1480-1½ 547 (600-1½)	1480-1¾ 547 (600-1¾)
C CIRCLING	1480-1	543 (600-1)	1480-1½ 543 (600-1½)	1560-2 623 (700-2)
BOHUW FIX MINIMUMS				
S-14	1380-1	447 (500-1)	1380-1¼ 447 (500-1¼)	1380-1½ 447 (500-1½)
C CIRCLING	1460-1	523 (600-1)	1480-1½ 543 (600-1½)	1560-2 623 (700-2)

EC-2, 23 JAN 2025 to 20 FEB 2025

EC-2, 23 JAN 2025 to 20 FEB 2025

HIRL Rwy 14-32 **0**
MIRL Rwy 3-21 **0**
REIL Rws 3, 14 and 21 **0**