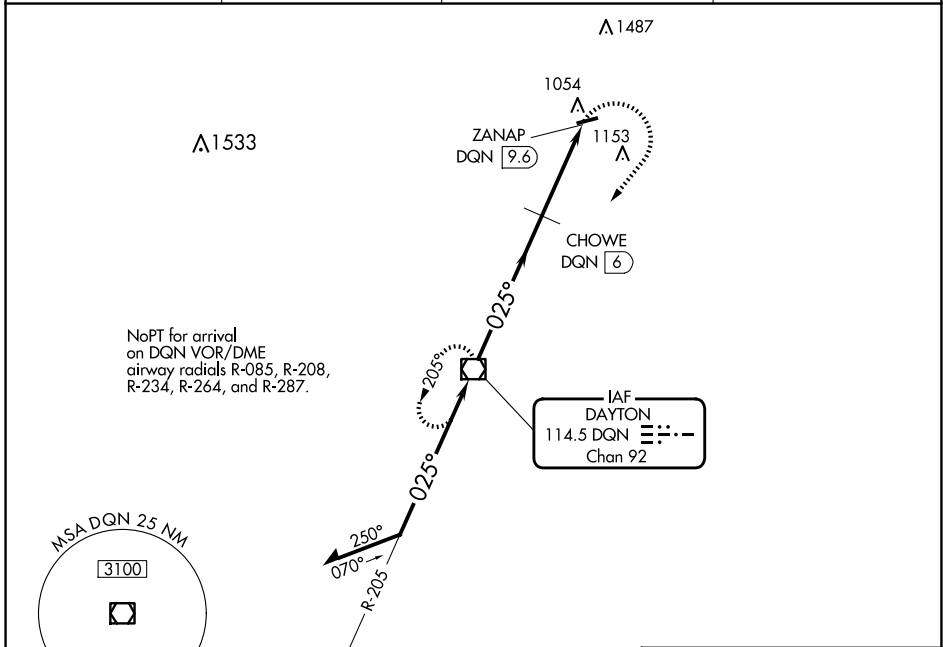


VOR/DME DGN 114.5 Chan 92	APP CRS 025°	Rwy Idg TDZE Apt Elev N/A N/A 993
---	------------------------	---

VOR-A
PIQUA/HARTZELL FLD (I17)

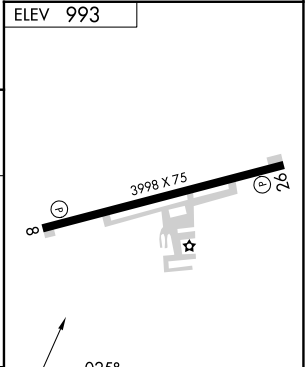
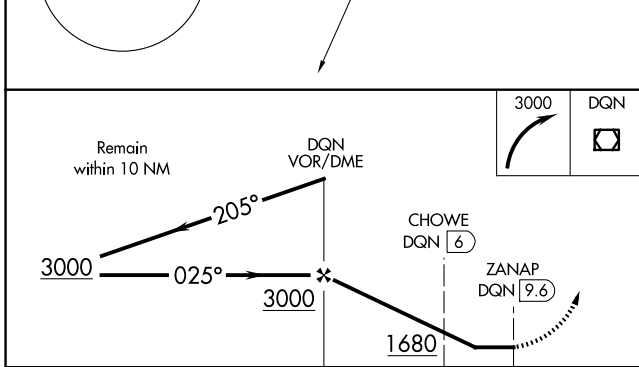
▽ ▲ NA	Use James M Cox Dayton Intl altimeter setting.	MISSED APPROACH: Climbing right turn to 3000 direct DGN VOR/DME and hold.
-------------------------	--	---

DAY ASOS 125.8	VES AWOS-3T 125.9	COLUMBUS APP CON 134.45 294.5 352.05	UNICOM 123.0 (CTAF) 0
--------------------------	-----------------------------	--	--



EC-2, 23 JAN 2025 to 20 FEB 2025

EC-2, 23 JAN 2025 to 20 FEB 2025



	DGN VOR/DME		CHOWE DGN (6)		ZANAP DGN (9.6)	
	3000		1680		1680	
	6 NM		3.6 NM			
CATEGORY	A	B	C	D		
CIRCLING	1680-1	687 (700-1)	1680-2	1880-3		
			687 (700-2)	887 (900-3)		
CHOWE FIX MINIMUMS (DME REQUIRED)						
CIRCLING	1500-1	1560-1	1560-1½	1880-3		
	507 (600-1)	567 (600-1)	567 (600-1½)	887 (900-3)		

ELEV 993	DGN
MIRL Rwy 8-26 0	
REIL Rws 8 and 26 0	
FAF to MAP 9.6 NM	
Knots	60 90 120 150 180
Min:Sec	9:36 6:24 4:48 3:50 3:12