


WAAS CH 97730 W14A	APP CRS 139°	Rwy Idg TDZE Apt Elev	5650 200 200
--	------------------------	-----------------------------	---

RNAV (GPS) RWY 14


BOIRE FLD (ASH)

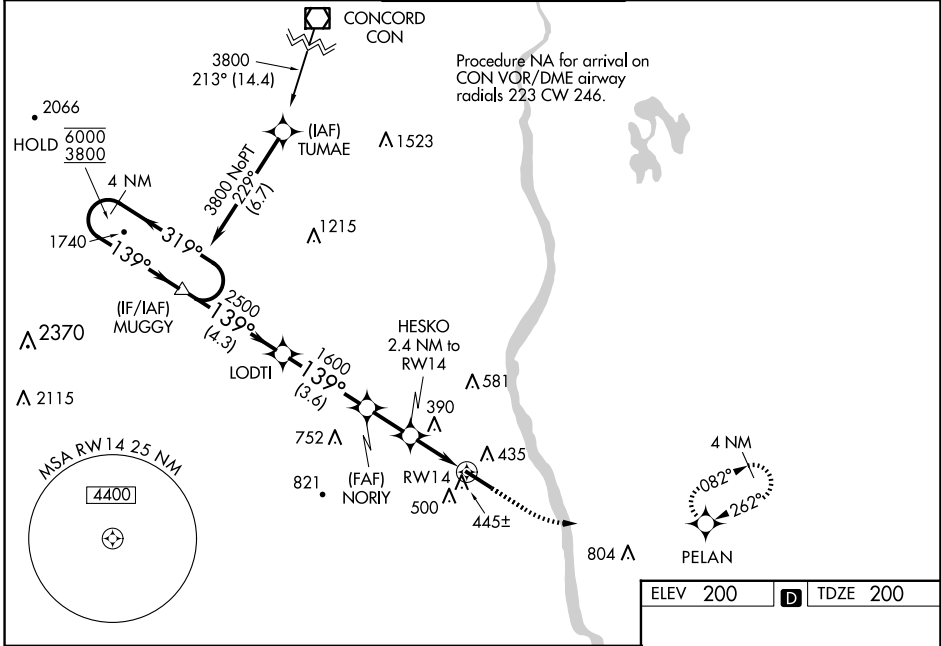
RNP APCH - GPS.

⚠ For uncompensated Baro-VNAV systems, LNAV/VNAV NA below -15°C or above 54°C. For inop ALS, increase LNAV/VNAV all Cats visibility to 1½ SM and LNAV Cat C/D visibility to 1¾ SM.

MALSR 

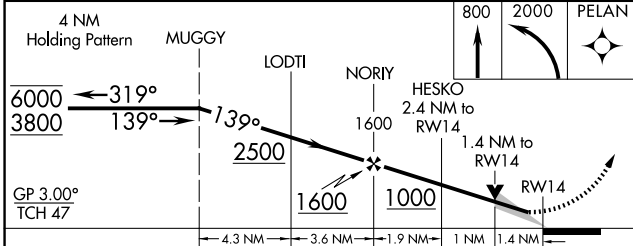
MISSED APPROACH:
Climb to 800 then climbing left turn to 2000 direct PELAN and hold.

ATIS 125.1	BOSTON APP CON 124.9 269.075	NASHUA TOWER * 133.2 (CTAF) 	GND CON 121.8	CLNC DEL 121.8
----------------------	--	---	-------------------------	--------------------------

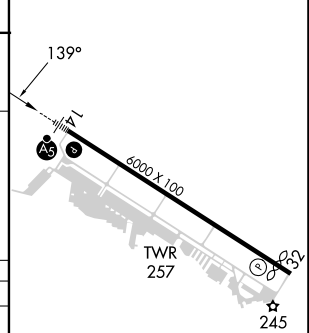


NE-1, 23 JAN 2025 to 20 FEB 2025


NE-1, 23 JAN 2025 to 20 FEB 2025



ELEV 200	D TDZE 200
----------	-------------------



CATEGORY	A	B	C	D
LPV DA		400-½	200 (200-½)	
LNAV/VNAV DA		614-¾	414 (500-¾)	
LNAV MDA	700-½	500 (500-½)	700-1	500 (500-1)
C CIRCLING	840-1 640 (700-1)	860-1 660 (700-1)	920-2 720 (800-2)	980-2½ 780 (800-2½)

HIRL Rwy 14-32 

REIL Rwy 32 