

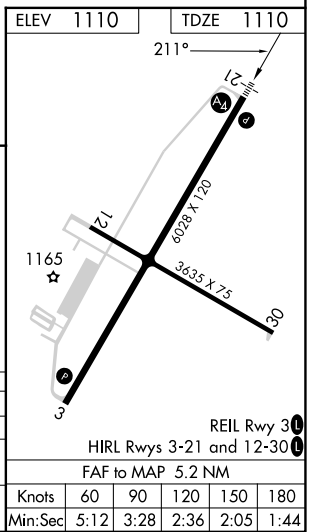
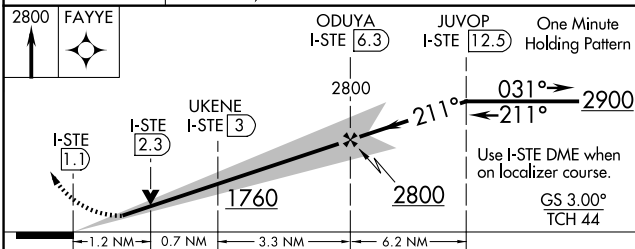
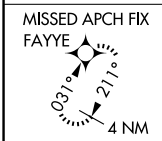
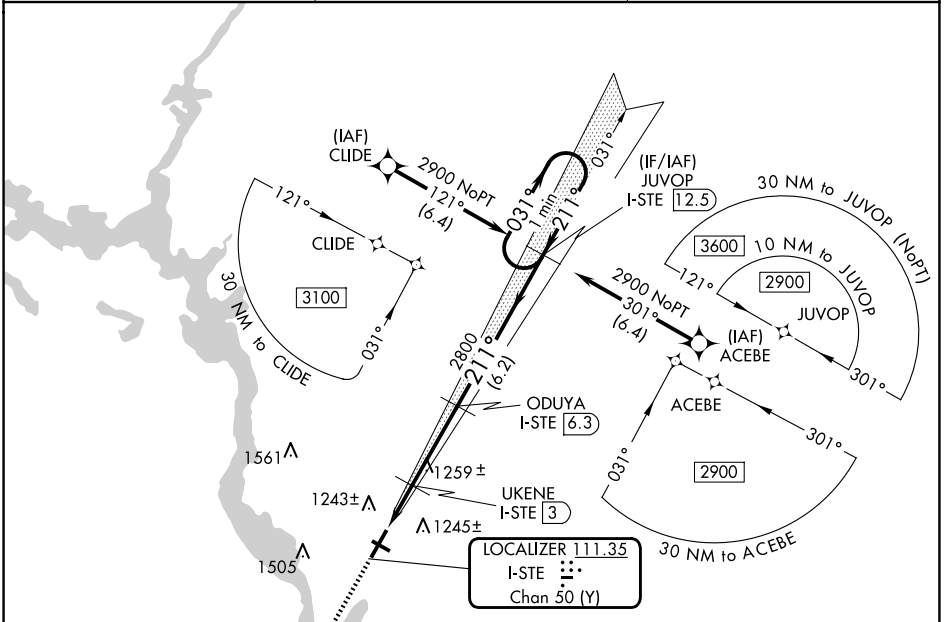
LOC/DME I-STE	APP CRS	Rwy Idg	6028
111.35	211°	TDZE	1110
Chan 50(Y)		Apt Elev	1110

ILS or LOC RWY 21

STEVENS POINT MUNI (STE)

RNP APCH - GPS.	MALS	MISSED APPROACH: Climb to 2800 direct FAYYE and hold.
DME required.		
<p> For inop ALS, increase S-LOC 21 Cat C/D visibility to 1½ SM. Inop table does not apply to S-ILS 21 all Cats. Autopilot coupled approach NA below 1400.</p>		

AWOS-3 119.275	MINNEAPOLIS CENTER 124.4 317.7	UNICOM 122.7 (CTAF)
--------------------------	--	-------------------------------



CATEGORY	A	B	C	D
S-ILS 21		1360-¾ 250 (300-¾)		
S-LOC 21	1520-¾ 410 (500-¾)		1520-1 410 (500-1)	
CIRCLING	1580-1 470 (500-1)	1600-1 490 (500-1)	1860-2¼ 750 (800-2¼)	1860-2½ 750 (800-2½)

EC-3, 23 JAN 2025 to 20 FEB 2025

EC-3, 23 JAN 2025 to 20 FEB 2025