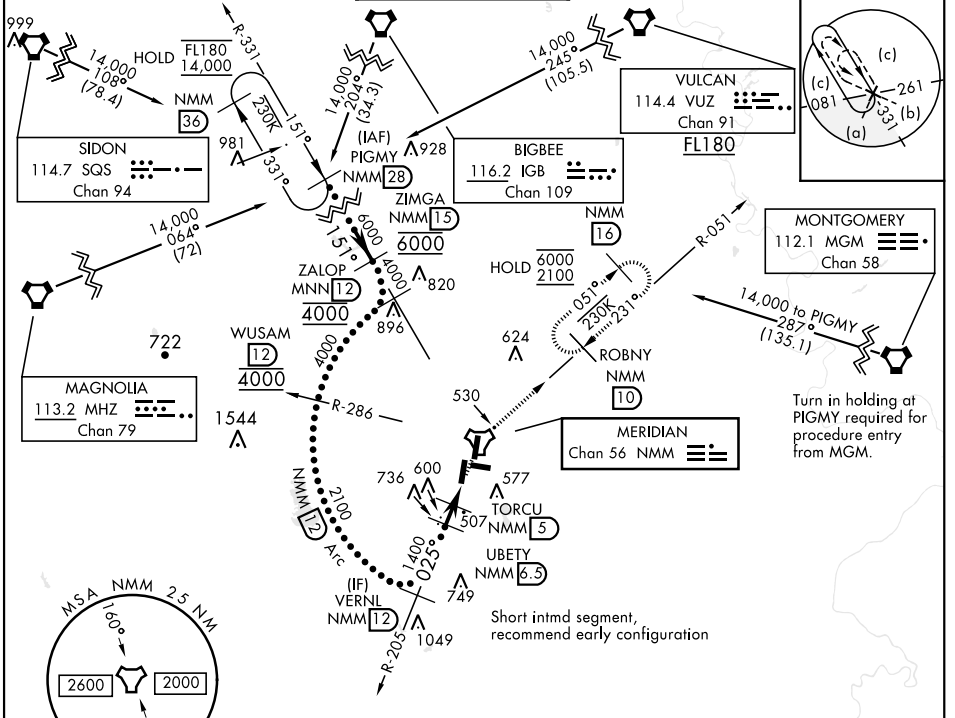


HI-TACAN Z RWY 1L

TACAN Chan 56	NMM 025°	APCH CRS 025°	Rwy ldg TDZE Arpt Elev 8003 254 316	AL-5079 [USN]	MERIDIAN NAS (MC CAIN FIELD) (KNMM)
-------------------------	--------------------	-------------------------	---	---------------	-------------------------------------

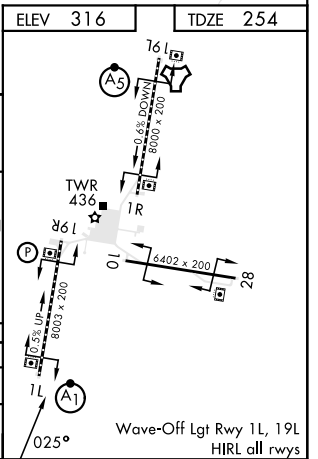
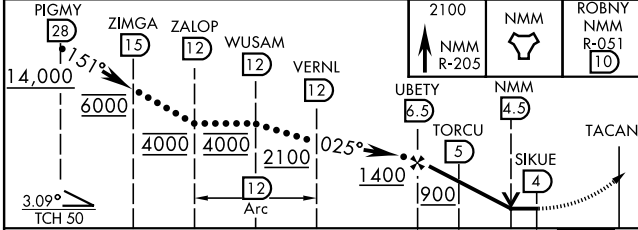
ALSIF-1
MISSED APPROACH: Climb to 2100 via NMM R-205 to NMM TACAN then via R-051 to ROBNY and hold.

ATIS ★ 290.525	APP CON 120.95 276.4	NAVY MC CAIN TOWER ★ 126.2 340.2	GND CON 336.4	CLNC DEL 301.0	ASR/ PAR
--------------------------	--------------------------------	--	-------------------------	--------------------------	-------------



ELEV 316	TDZE 254
----------	----------

EMERG SAFE ALT 100 NM 3700



CATEGORY	C	D	E
S-1L *	760-1	506 (500-1)	
CIRCLING	840-1 1/2 524 (600-1 1/2)	880-2 564 (600-2)	1080-2 3/4 764 (800-2 3/4)

HI-TACAN Z RWY 1L

SC-4, 23 JAN 2025 to 20 FEB 2025

SC-4, 23 JAN 2025 to 20 FEB 2025