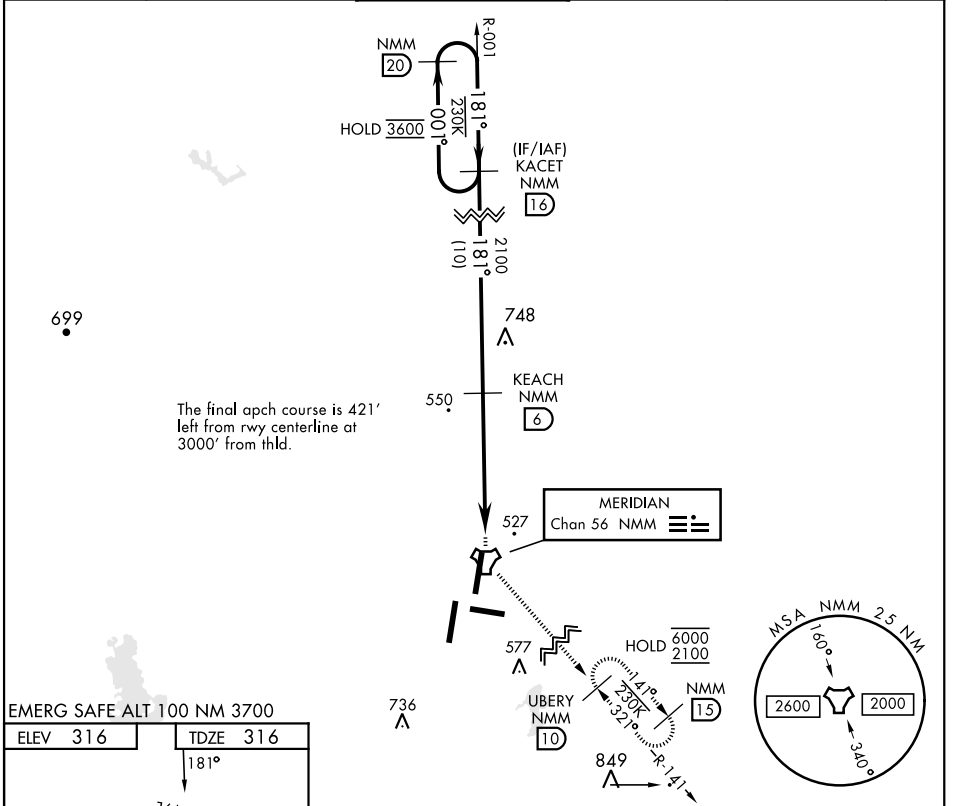


MERIDIAN, MISSISSIPPI

TACAN Y RWY 19L

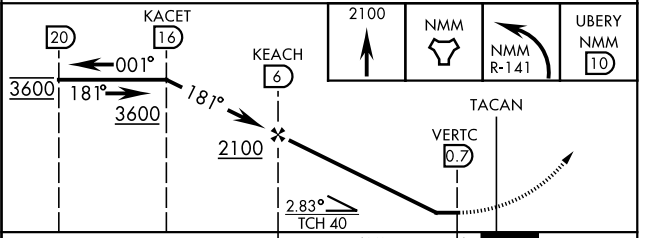
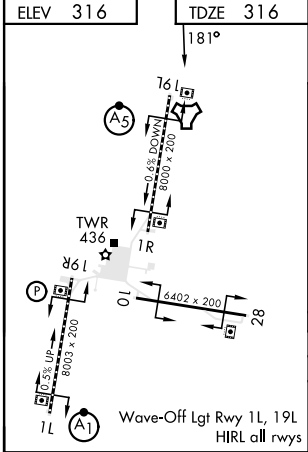
TACAN NMM Chan 56	APCH CRS 181°	Rwy Idg TDZE 316 Arprt Elev 316	AL-5079 [USN]	MERIDIAN NAS (MC CAIN FIELD) (KNMM)
RADAR required.			MALSR	MISSED APPROACH: Climb to 2100 direct NMM TACAN then via R-141 to UBERY and hold.
* When ALS inop, increase CAT AB vis to 1 mile; CDE vis to 1/8 miles.				

ATIS ★ 290.525	APP CON 120.95 276.4	NAVY MC CAIN TOWER ★ 126.2 340.2	GND CON 336.4	CLNC DEL 301.0	ASR/PAR
-----------------------	-----------------------------	---	----------------------	-----------------------	---------



The final apch course is 421' left from rwy centerline at 3000' from thld.

EMERG SAFE ALT 100 NM 3700



CATEGORY	A	B	C	D	E
S-19L *	800-1/2 484	(500-1/2)	800-1 484	(500-1)	
CIRCLING	820-1 504 (600-1)	840-1 524 (600-1)	840-1 1/2 524 (600-1 1/2)	880-2 564 (600-2)	1080-2 3/4 764 (800-2 3/4)

MERIDIAN, MISSISSIPPI 32°33' N - 88°33' W MERIDIAN NAS (MC CAIN FIELD) (KNMM)

Amtd 2 08SEP22

TACAN Y RWY 19L

SC-4, 23 JAN 2025 to 20 FEB 2025

SC-4, 23 JAN 2025 to 20 FEB 2025