

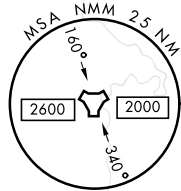
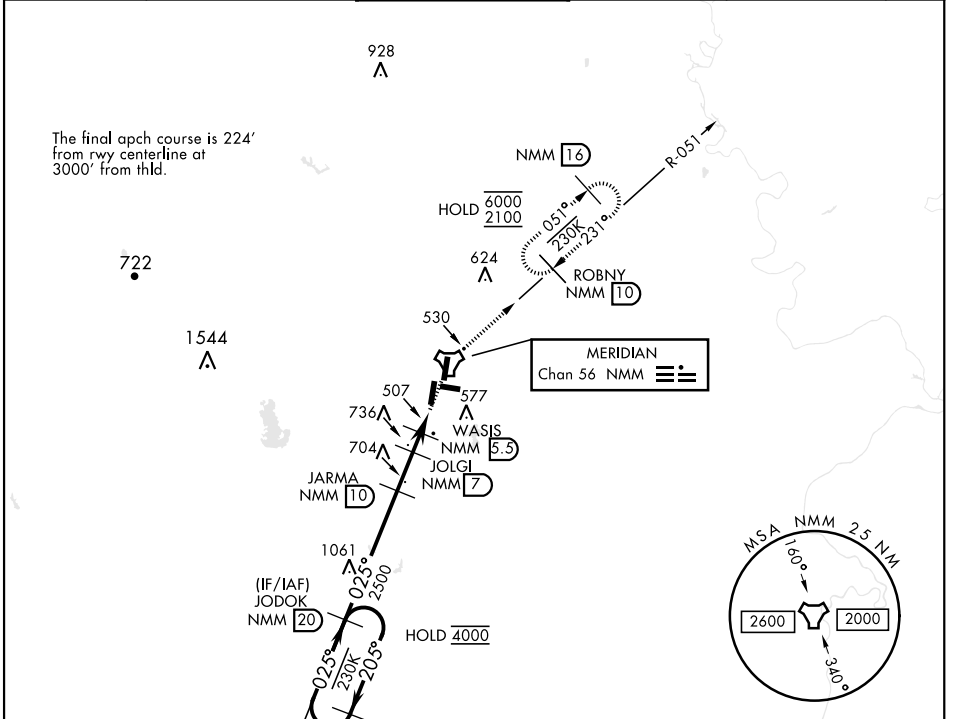
MERIDIAN, MISSISSIPPI

# TACAN Y RWY 1L

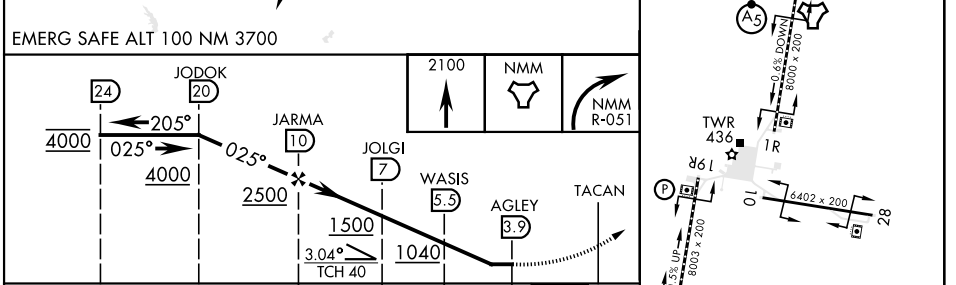
TACAN NMM Chan <b>56</b>	APCH CRS <b>025°</b>	Rwy ldg TDZE <b>8003</b> <b>254</b> Arprt Elev <b>316</b>	AL-5079 [USN]	MERIDIAN NAS (MC CAIN FIELD) (KNMM)
--------------------------	----------------------	---	---------------	-------------------------------------

RADAR required.	ALSIF-1	MISSED APPROACH: Climb to 2100 direct NMM TACAN then via R-051 to ROBNY and hold.
<p>▼ * When ALS inop, increase CAT AB vis to 1 mile; CAT CDE vis to 1 1/8 miles.</p>		

ATIS ★ <b>290.525</b>	APP CON <b>120.95 276.4</b>	NAVY MC CAIN TOWER ★ <b>126.2 340.2</b>	GND CON <b>336.4</b>	CLNC DEL <b>301.0</b>	ASR/PAR
-----------------------	-----------------------------	---	----------------------	-----------------------	---------

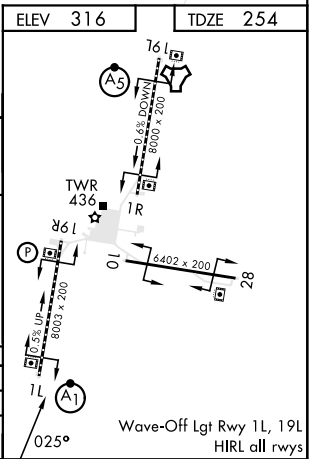


ELEV 316	TDZE 254
----------	----------



EMERG SAFE ALT 100 NM 3700

CATEGORY	A	B	C	D	E
S-1L *	760-1/2	506 (500-1/2)	760-1	506 (500-1)	
CIRCLING	820-1	840-1	840-1 1/2	880-2	1080-2 3/4
	504 (600-1)	524 (600-1)	524 (600-1 1/2)	564 (600-2)	764 (800-2 3/4)



Wave-Off Lgt RWY 1L, 19L  
HIRL all rwys

# TACAN Y RWY 1L

SC-4, 23 JAN 2025 to 20 FEB 2025

SC-4, 23 JAN 2025 to 20 FEB 2025