

VOR/DME SBJ 112.9 Chan 76	APP CRS 061°	Rwy Idg 1923 TDZE 106 Apt Elev 106
-----------------------------------------------	------------------------	---------------------------------------------------------------

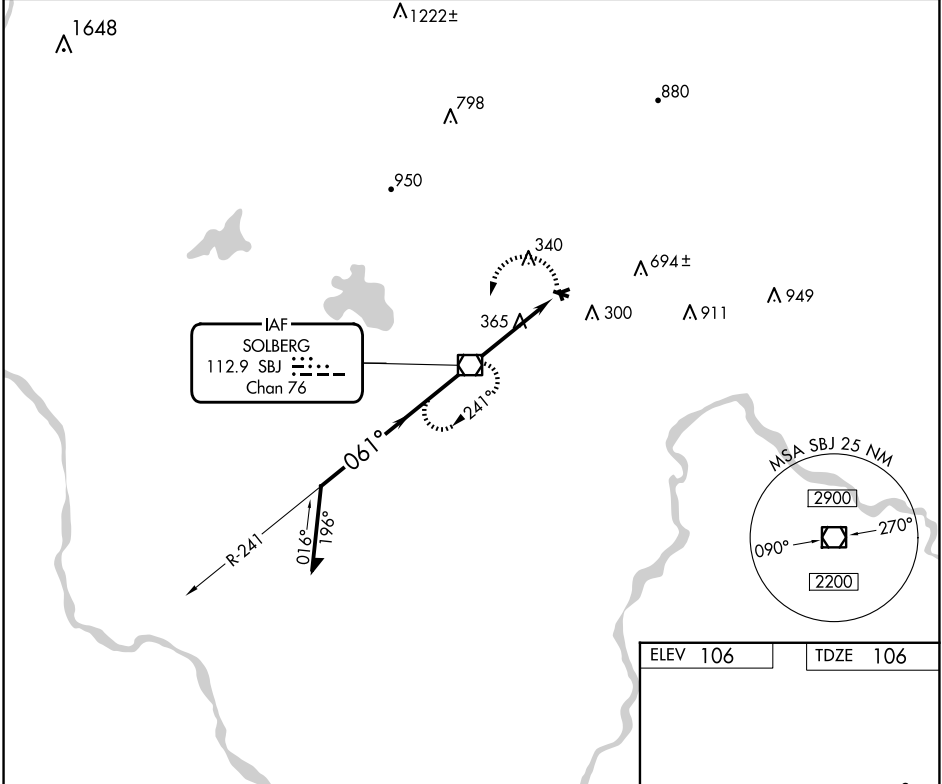
VOR RWY 8

SOMERSET (SMQ)

- ▼ Circling Rwy 8, 17, 26, 30 and 35 NA at night.
- ▲ Rwy 8 helicopter visibility reduction below 1 SM NA.
- ▲ Straight-in Rwy 8 NA at night.

MISSED APPROACH: Climbing left turn to 2100 direct SBJ VOR/DME and hold.

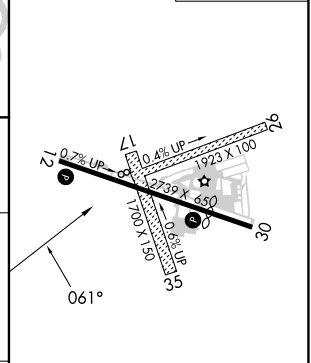
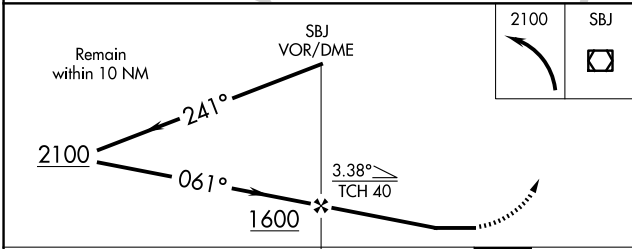
ASOS 120.6	NEWARK APP CON 132.8 379.9	UNICOM 123.0 (CTAF)	118.325 0
----------------------	--------------------------------------	-------------------------------	------------------



NE-2, 23 JAN 2025 to 20 FEB 2025

NE-2, 23 JAN 2025 to 20 FEB 2025

ELEV 106	TDZE 106
----------	----------



CATEGORY	A	B	C	D
S-8	700-1	594 (600-1)		NA
CIRCLING	700-1 594 (600-1)	960-1¼ 854 (900-1¼)		NA

REIL Rwy 12 and 30					
MRL Rwy 12-30					
FAF to MAP 4.1 NM					
Knots	60	90	120	150	180
Min:Sec	4:06	2:44	2:03	1:38	1:22