

LOC I-AUM 110.55	APP CRS 351°	Rwy Idg 5800
		TDZE 1231
		Apt Elev 1234

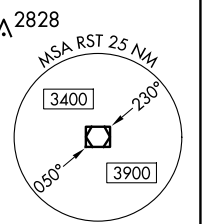
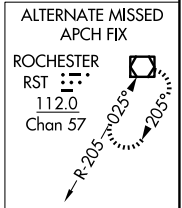
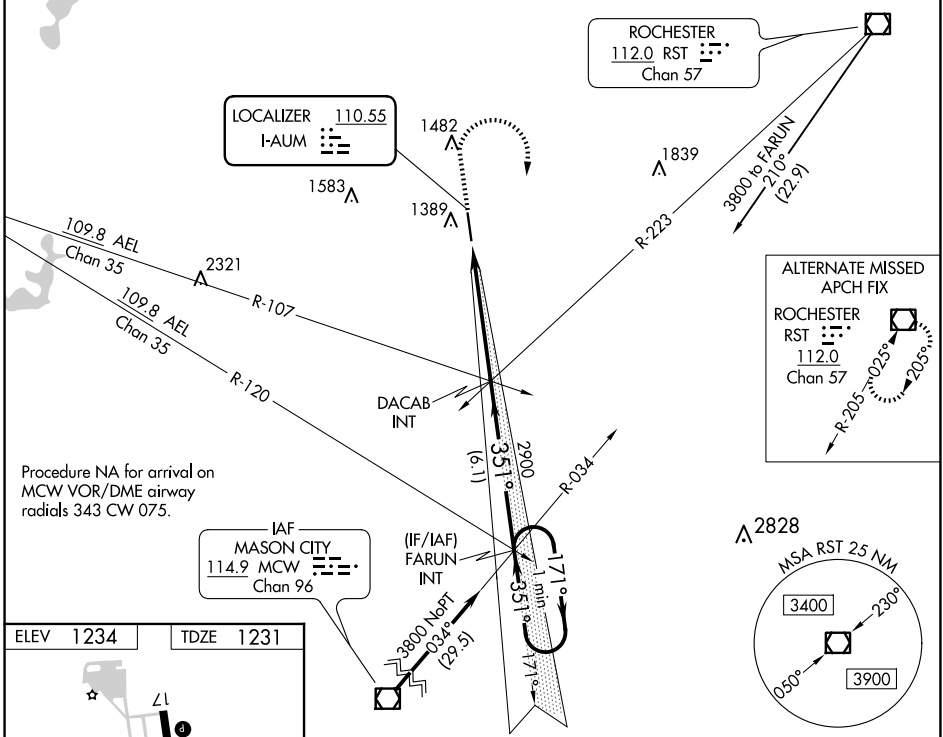
ILS or LOC RWY 35

AUSTIN MUNI (AUM)

▽ When local altimeter setting not received, use Albert Lea altimeter setting and increase all DA 48 feet and all MDA 60 feet; increase Circling Cat C/D and **△ NA** visibility ¼ SM. For inoperative MALSRL, increase S-LOC 35 Cats C and D visibility to 1 ⅜ mile.

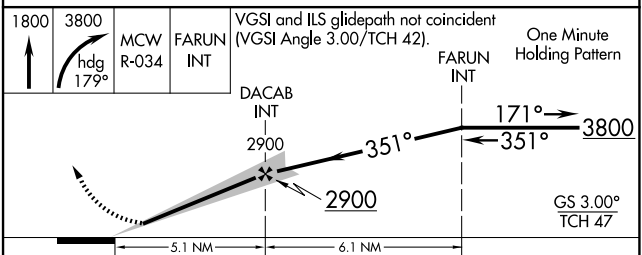
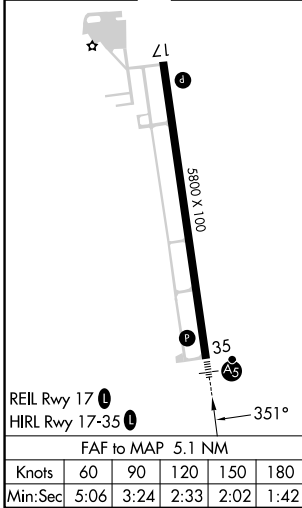
MALSRL MISSED APPROACH: Climb to 1800 then climbing right turn to 3800 on heading 179° and MCW VOR/DME R-034 to FARUN INT and hold.

AWOS-3 119.025	ROCHESTER APP CON* 119.8 251.125	UNICOM 122.7 (CTAF)
--------------------------	--	-------------------------------



Procedure NA for arrival on MCW VOR/DME airway radials 343 CW 075.

ELEV 1234	TDZE 1231
-----------	-----------



CATEGORY	A	B	C	D
S-ILS 35	1431-1/2		200 (200-1/2)	
S-LOC 35	1700-1/2	469 (500-1/2)	1700-1	469 (500-1)
C CIRCLING	1740-1	506 (600-1)	1800-1 1/2 566 (600-1 1/2)	1880-2 646 (700-2)

NC-1, 23 JAN 2025 to 20 FEB 2025

NC-1, 23 JAN 2025 to 20 FEB 2025