

WAAS CH 56415 W30A	APP CRS 298°	Rwy ldg TDZE Apt Elev	5320 919 919
--	------------------------	-----------------------------	---

RNAV (GPS) RWY 30

ANDERSON MUNI-DARLINGTON FLD (A1D)

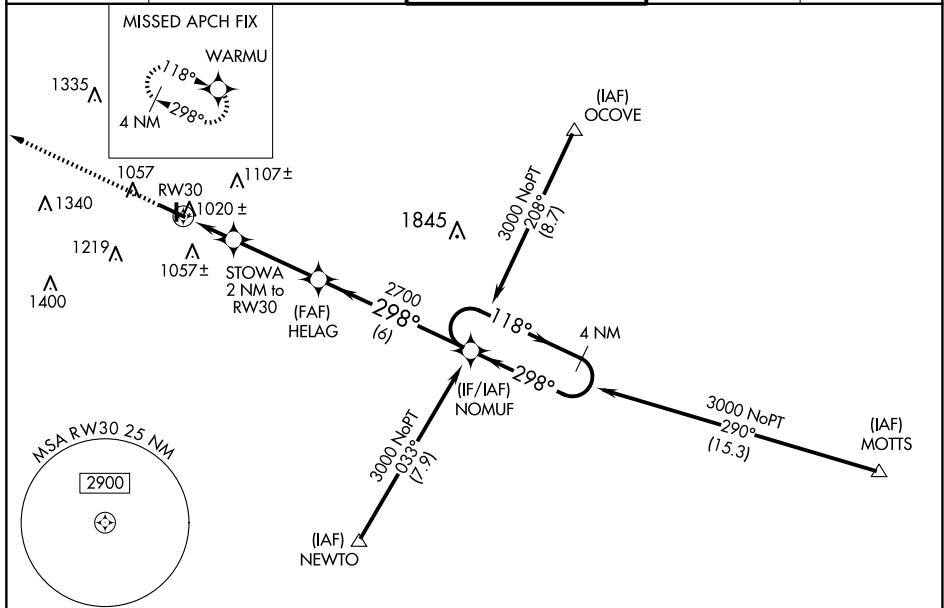
RNP APCH.

For uncompensated Baro-VNAV systems, LNAV/VNAV NA below -16°C (4°F) or above 47°C (116°F). When local altimeter setting not received, use Muncie altimeter setting and increase all DA 32 feet and all MDA 40 feet, and increase LPV and LNAV/VNAV all Cats and LNAV Cat C visibility ¼ mile. Inoperative table does not apply.
Rwy 30 helicopter visibility reduction below ¾ SM NA.

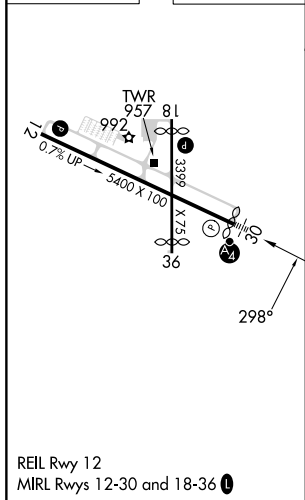


MISSED APPROACH:
Climb to 3000 direct WARMU and hold.

AWOS-3 128.55	INDIANAPOLIS APP CON 120.65 317.8	ANDERSON TOWER * 126.0 (CTAF) 0	GND CON 121.6	UNICOM 122.95
-------------------------	---	---	-------------------------	-------------------------



ELEV 919	TDZE 919
----------	----------



3000 WARMU	4 NM Holding Pattern			
NOMUF	HELAG	118° → 3000		← 298°
*LNAV only	STOWA 2 NM to RW30	298°	2700	GP 3.00° TCH 48
1 NM to RW30	1600*	2700	3.4 NM	6 NM
RW30	1 NM	1 NM	3.4 NM	6 NM
CATEGORY	A	B	C	D
LPV DA	1234-1		315 (400-1)	
LNAV/VNAV DA	1367-1½		448 (500-1½)	
LNAV MDA	1300-1		381 (400-1)	
CIRCLING	1360-1 441 (500-1)	1400-1 481 (500-1)	1520-1¾ 601 (700-1¾)	1520-2 601 (700-2)

EC-2, 23 JAN 2025 to 20 FEB 2025

EC-2, 23 JAN 2025 to 20 FEB 2025