

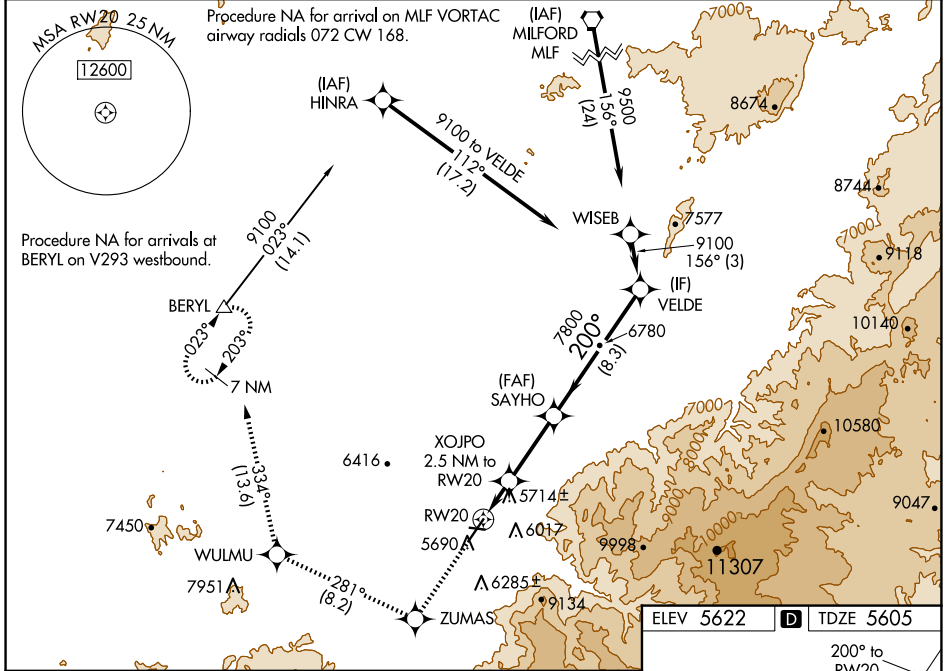
WAAS CH 72640 W20A	APP CRS 200°	Rwy Idg TDZE Apt Elev	8653 5605 5622
--	------------------------	-----------------------------	---

RNAV (GPS) RWY 20

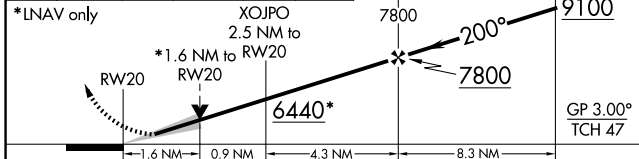
CEDAR CITY RGNL (CDC)

RNP APCH.	MALSR	MISSED APPROACH: Climb to 9800 direct ZUMAS and on track 281° to WULMU and on track 334° to BERYL and hold.
<p>Circling NA east of Rwy 2-20. Baro-VNAV NA. For inop ALS, increase LNAV/VNAV all Cats visibility to 1½ SM and LNAV Cats C/D visibility to 1½ SM.</p>		

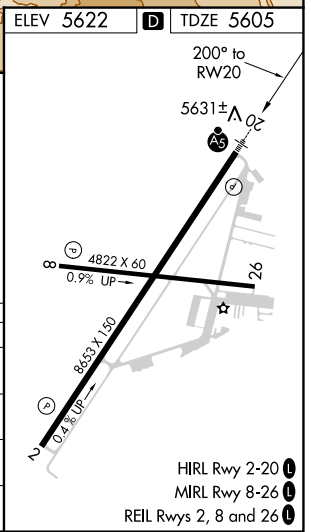
ASOS 119.025	SALT LAKE CITY CENTER 125.575 379.275	UNICOM 123.0 (CTAF)
------------------------	---	-------------------------------



9800	ZUMAS	WULMU	BERYL	SAYHO	VELDE
↑	◆	◆	△	◆	◆
	tr 281°	tr 334°			



CATEGORY	A	B	C	D
LPV DA		5825-½	220 (300-½)	
LNAV/VNAV DA		6015-¾	410 (400-¾)	
LNAV MDA	6180-½	575 (600-½)	6180-¼	575 (600-¼)
CIRCLING	6180-1	558 (600-1)	6180-1½	6180-2
			558 (600-1½)	558 (600-2)



SW-4, 23 JAN 2025 to 20 FEB 2025

SW-4, 23 JAN 2025 to 20 FEB 2025

- HIRL Rwy 2-20
- MIRL Rwy 8-26
- REIL Rws 2, 8 and 26