

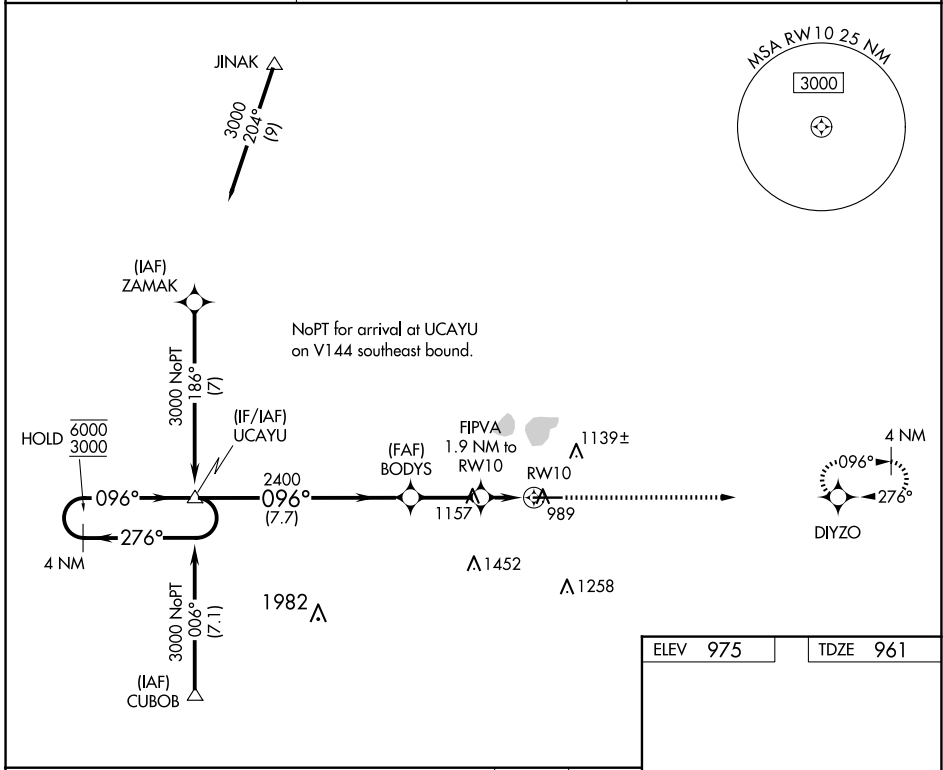
WAAS CH <b>65816</b> <b>W10A</b>	APP CRS <b>096°</b>	Rwy ldg TDZE Apt Elev	<b>6000</b> <b>961</b> <b>975</b>
--	------------------------	-----------------------------	---

# RNAV (GPS) RWY 10

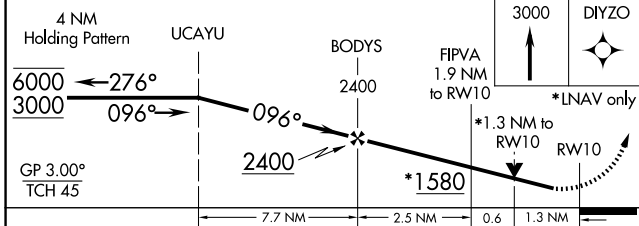
LIMA ALLEN COUNTY (AOH)

RNP APCH.	MISSED APPROACH: Climb to 3000 direct DIYZO and hold.
<p>▼ Rwy 10 helicopter visibility reduction below 3/4 SM NA. For uncompensated Baro-VNAV systems, LNAV/VNAV NA below -16°C or above 54°C.</p> <p>▲</p>	

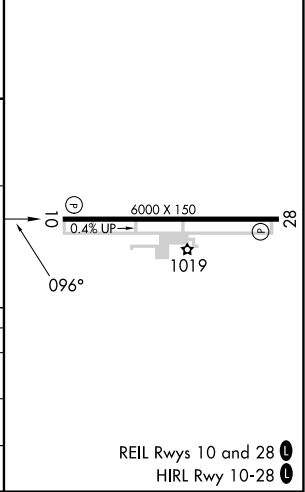
ASOS <b>128.725</b>	COLUMBUS APP CON <b>121.825 323.15</b>	UNICOM <b>122.7 (CTAF) 0</b>
------------------------	---	---------------------------------



ELEV 975	TDZE 961
----------	----------



CATEGORY	A	B	C	D
LPV DA		1211-1	250 (300-1)	
LNAV/VNAV DA		1272-1	311 (300-1)	
LNAV MDA	1420-1	459 (500-1)	1420-1 <sup>3</sup> / <sub>8</sub>	459 (500-1 <sup>3</sup> / <sub>8</sub> )



EC-2, 23 JAN 2025 to 20 FEB 2025

EC-2, 23 JAN 2025 to 20 FEB 2025