

LOC/DME I-BJI 109.35 Chan 30 (Y)	APP CRS 253°	Rwy Idg TDZE Apt Elev	5700 1389 1391
---	------------------------	-----------------------------	---

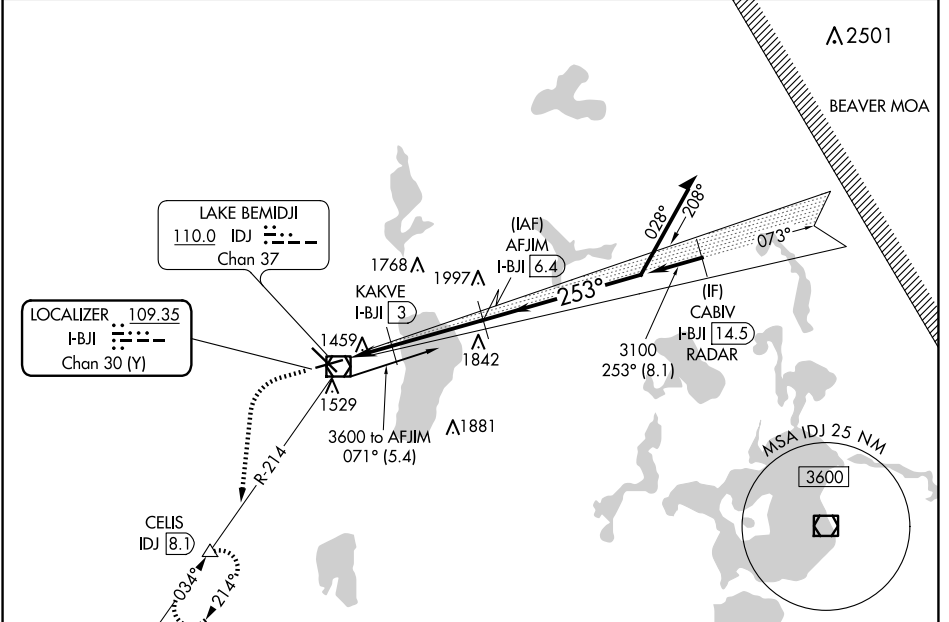
ILS or LOC RWY 25

BEMIDJI RGNL (BJI)

DME required. RADAR required for procedure entry.

MISSED APPROACH: Climb to 3400 then climbing left turn to 3400 on heading 185° and IDJ VOR/DME R-214 to CELIS/IDJ VOR/DME 8.1 DME and hold, continue climb-in-hold to 3400.

AWOS-3 119.275	MINNEAPOLIS CENTER 134.75 251.1	UNICOM 122.8 (CTAF)
--------------------------	---	-------------------------------



NC-1, 23 JAN 2025 to 20 FEB 2025

NC-1, 23 JAN 2025 to 20 FEB 2025

ELEV 1391	TDZE 1389								
<table border="1"> <tr> <td>2300</td> <td>3400</td> <td>IDJ</td> <td>CELIS</td> </tr> <tr> <td>↑</td> <td>hdg 185°</td> <td>R-214</td> <td>△</td> </tr> </table>	2300	3400	IDJ	CELIS	↑	hdg 185°	R-214	△	<p>Use I-BJI DME when on the localizer course.</p> <p>Remain within 10 NM</p>
2300	3400	IDJ	CELIS						
↑	hdg 185°	R-214	△						
<p>*LOC only</p>	<p>GS 3.00°</p> <p>TCH 46</p>								
CATEGORY	A	B	C	D					
S-ILS 25		1589-¾	200 (200-¾)						
S-LOC 25		1720-1	331 (400-1)						
CIRCLING	1840-1 449 (500-1)	1860-1 469 (500-1)	1860-1½ 469 (500-1½)	1960-2 569 (600-2)					

