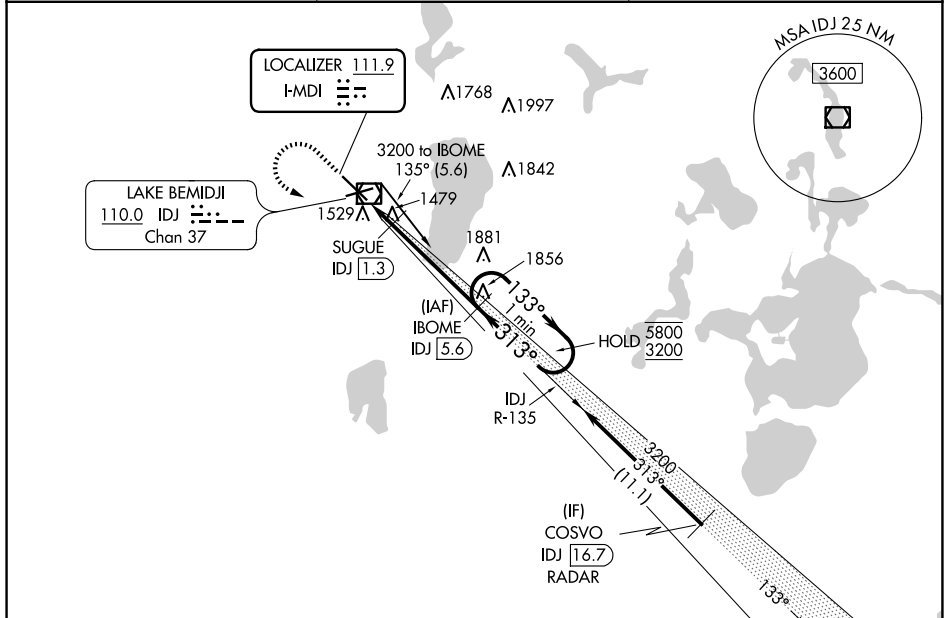


LOC I-MDI 111.9	APP CRS 313°	Rwy ldg 7002
		TDZE 1389
		Apt Elev 1391

ILS or LOC RWY 31

BEMIDJI RGNL (BJI)

DME required. RADAR required for procedure entry.		MALSR 	MISSED APPROACH: Climb to 2400 then climbing left turn to 3200 on heading 100° and IDJ VOR/DME R-135 to IBOME/IDJ 5.6 DME and hold.
Autopilot coupled approach NA below 2126. DME from IDJ VOR/DME. Simultaneous reception of I-MDI and IDJ DME required. For inop ALS, increase S-LOC 31 Cat C/D visibility to 1 SM.			
AWOS-3 119.275	MINNEAPOLIS CENTER 134.75 251.1	UNICOM 122.8 (CTAF) 0	



ELEV 1391	D	TDZE 1389
-----------	----------	-----------

HIRL Rwy 13-31 313° 5.6 NM from FAF
 MIRL Rwy 7-25
 REIL Rwys 7 and 25

FAF to MAP 5.6 NM					
Knots	60	90	120	150	180
Min:Sec	5:36	3:44	2:48	2:14	1:52

2400	3200	IDJ R-135	IBOME IDJ 5.6	IBOME IDJ 5.6	3200	5800	3200
↑	hdg 100°				One Minute Holding Pattern		
*LOC only							
SUGUE IDJ 1.3		1840*		133° → 5800		3200	
← 1.3 NM		← 4.3 NM		← 313°		GS 3.00° TCH 45	
CATEGORY	A	B	C	D			
S-ILS 31	1589-½		200 (200-½)				
S-LOC 31	1740-½ 351 (400-½)		1740-⅝ 351 (400-⅝)				

NC-1, 23 JAN 2025 to 20 FEB 2025

NC-1, 23 JAN 2025 to 20 FEB 2025