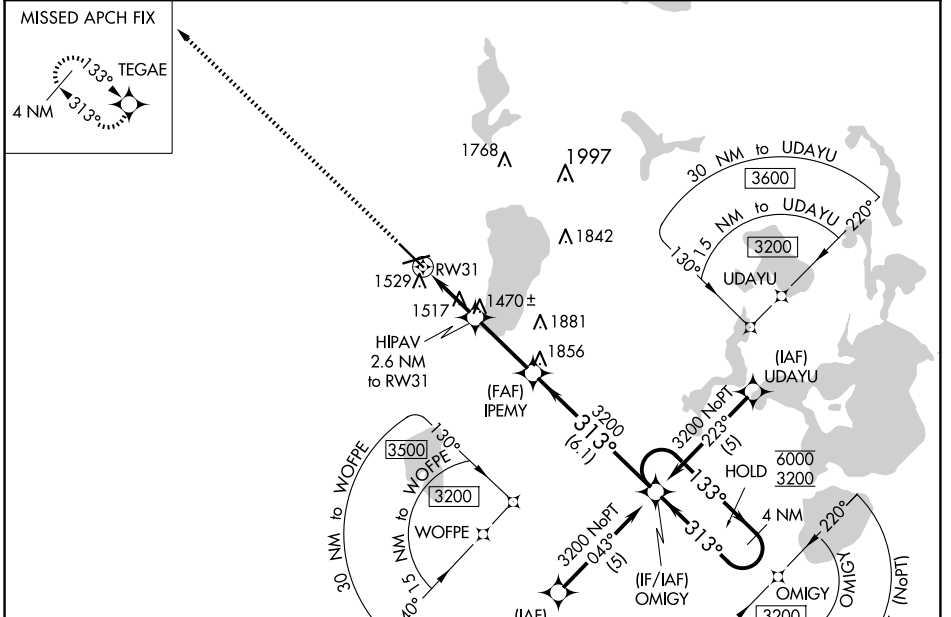


WAAS CH <b>99711</b> <b>W31A</b>	APP CRS <b>313°</b>	Rwy Idg TDZE Apt Elev	<b>7002</b> <b>1389</b> <b>1391</b>
--	------------------------	-----------------------------	---

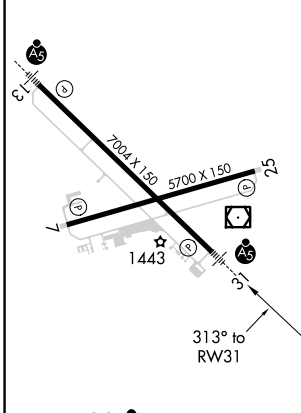
# RNAV (GPS) RWY 31

BEMIDJI RGNL (BJI)

RNP APCH.		MALSR	MISSED APPROACH: Climb to 3200 direct TEGAE and hold.
<p>⚠ For uncompensated Baro-VNAV systems, LNAV/VNAV NA below -17°C or above 46°C. For inop ALS, increase LNAV/VNAV all Cats and LNAV Cats C/D visibility to 1¼ SM.</p>			
AWOS-3 <b>119.275</b>	MINNEAPOLIS CENTER <b>134.75 251.1</b>	UNICOM <b>122.8</b> (CTAF)	



ELEV 1391		TDZE 1389
-----------	--	-----------



HIRL Rwy 13-31

MIRL Rwy 7-25

REIL Rwy 7 and 25

3200	TEGAE	HIPAV 2.6 NM to RW31	IPEMY 3200	OMIGY	4 NM Holding Pattern
*LNAV only.		*1.1 NM to RW31	313°	133°	6000
RW31		2240*	3200	313°	3200
-1.1 NM		-1.5 NM	-2.9 NM	-6.1 NM	GP 3.00° TCH 45°
CATEGORY	A	B	C	D	
LPV DA		1589-½		200 (200-½)	
LNAV/VNAV DA		1825-1		436 (500-1)	
LNAV MDA	1780-½	391 (400-½)	1780-⅝ 391 (400-⅝)	1780-1 391 (400-1)	
CIRCLING	1840-1 449 (500-1)	1860-1 469 (500-1)	1860-1½ 469 (500-1½)	1960-2 569 (600-2)	

NC-1, 23 JAN 2025 to 20 FEB 2025