

VOR/DME IDJ	APP CRS	Rwy Idg	<b>7002</b>
<b>110.0</b>	<b>126°</b>	TDZE	<b>1391</b>
Chan <b>37</b>		Apt Elev	<b>1391</b>

# VOR/DME RWY 13

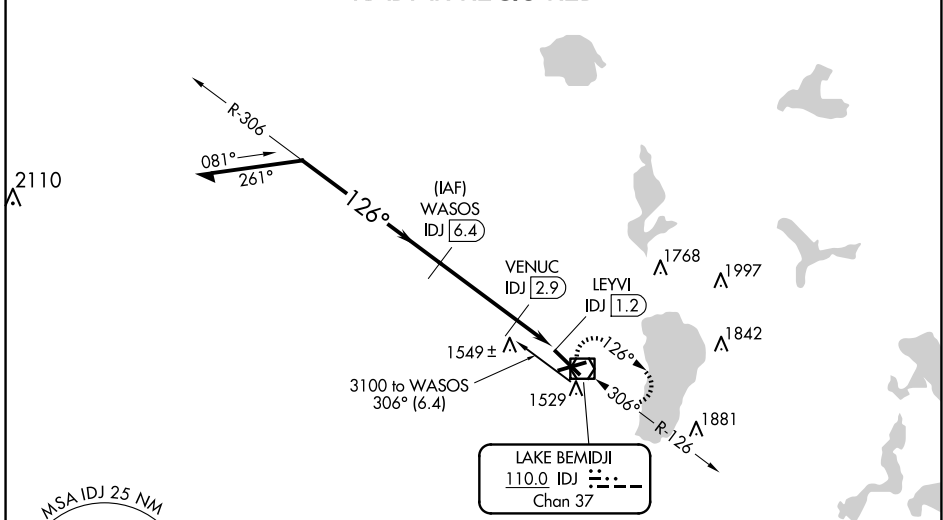
BEMIDJI RGNL (BJI)

**NA** When local altimeter setting not received, use Park Rapids altimeter setting and increase all MDA 100 feet, increase S-13 Cat C and D visibility 1/4 mile. VDP NA with Park Rapids altimeter setting. For inoperative MALSRL, increase S-13 Cat A and B visibility to 1 mile and Cat C and D visibility to 1 1/2 mile. For inoperative MALSRL when using Park Rapids altimeter setting, increase S-13 Cat A and B visibility to 1 mile and Cat C and D visibility to 1 3/8 mile. Helicopter visibility reduction below 3/4 SM not authorized.

**MALSRL** MISSED APPROACH: Climb to 3100 direct IDJ VOR/DME and hold, continue climb-in-hold to 3100.

AWOS-3 <b>119.275</b>	MINNEAPOLIS CENTER <b>134.75 251.1</b>	UNICOM <b>122.8 (CTAF)</b>
--------------------------	---	-------------------------------

## RADAR REQUIRED

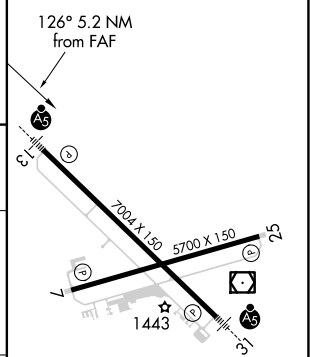


NC-1, 23 JAN 2025 to 20 FEB 2025

NC-1, 23 JAN 2025 to 20 FEB 2025



ELEV 1391	<b>D</b> TDZE 1391
-----------	--------------------



Remain within 10 NM	WASOS IDJ [6.4]	3100 IDJ
3100	306°	3100
3100	126°	3100
	301° TCH 45	
	126°	2000
	3.4 NM	0.6
		1.1 NM

CATEGORY	A	B	C	D
S-13	1800-3/4 409 (500-3/4)			
<b>C</b> CIRCLING	1840-1 449 (500-1)	1860-1 469 (500-1)	1860-1 1/2 469 (500-1 1/2)	1960-2 569 (600-2)

HIRL Rwy 13-31 **D**  
 MRL Rwy 7-25 **D**  
 REL Rwy 7 and 25 **D**