

| | | | |
|--|------------------------|-----------------------------|---|
| WAAS CH 90301 W07A | APP CRS 066° | Rwy Idg TDZE Apt Elev | 5500 515 529 |
|--|------------------------|-----------------------------|---|

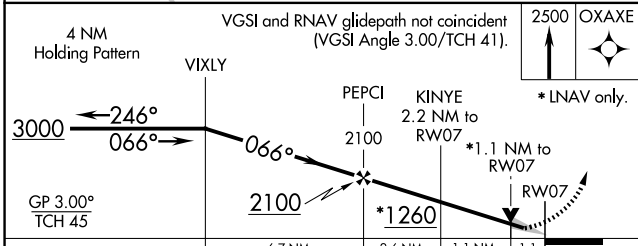
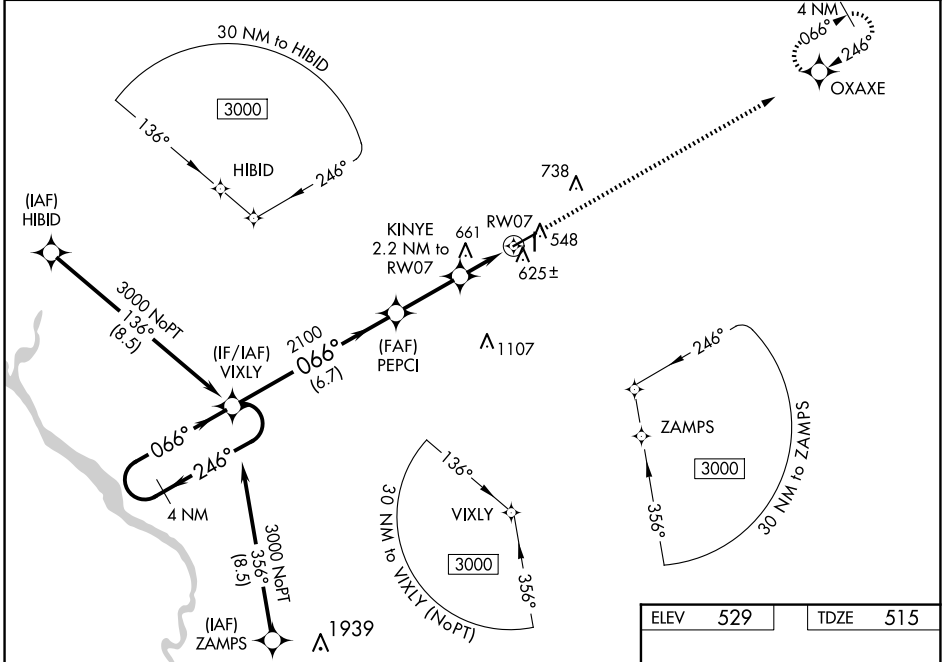
RNAV (GPS) RWY 7

AIKEN RGNL (AIK)

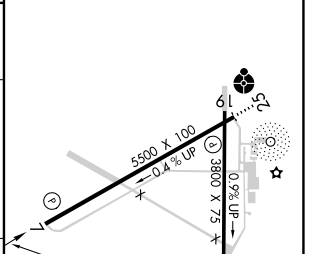
⚠ Baro-VNAV NA when using Augusta Rgnl at Bush Fld altimeter setting. For uncompensated Baro-VNAV systems, LNAV/VNAV NA below -16°C (4°F) or above 40°C (104°F). DME/DME RNP-0.3 NA. VDP NA with Augusta Rgnl at Bush Fld altimeter setting. When local altimeter setting not received, use Augusta Rgnl at Bush Fld altimeter setting: increase LPV all Cats DAs to 890 feet and all Cats visibility ¼ SM; increase LNAV/VNAV all Cats DAs to 890 feet and all Cats visibility ¾ SM; increase all MDAs 120 feet and LNAV Cats C/D visibility ¾ SM and Circling Cat C visibility ¼ SM.

MISSED APPROACH: Climb to 2500 direct OXAXE and hold.

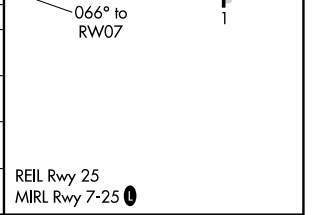
| | | | |
|--------------------------|--|----------------------------|---------------------------------|
| AWOS-3 118.025 | AUGUSTA APP CON * 119.15 284.625 | CLNC DEL 126.075 | UNICOM 122.8 (CTAF) 0 |
|--------------------------|--|----------------------------|---------------------------------|



| | | | |
|------|-----|------|-----|
| ELEV | 529 | TDZE | 515 |
|------|-----|------|-----|



| CATEGORY | A | B | C | D |
|--------------|----------------------|-----------------------|-------------------------|-----------------------|
| LPV DA | | 715-¾ | 200 (200-¾) | |
| LNAV/VNAV DA | | 786-⅞ | 271 (300-⅞) | |
| LNAV MDA | 920-1 | 405 (400-1) | 920-1⅛ | 405 (400-1⅛) |
| CIRCLING | 980-1 451 (500-1) | 1000-1 471 (500-1) | 1140-1¾ 611 (700-1¾) | 1420-3 891 (900-3) |



SE-2, 23 JAN 2025 to 20 FEB 2025

SE-2, 23 JAN 2025 to 20 FEB 2025