

# RNAV (GPS) RWY 14

APCH CRS	Rwy Idg	3025
139°	TDZE	12
	Arprt Elev	12

[USA]

FELKER AAF (KFAP)

RNP APCH - GPS

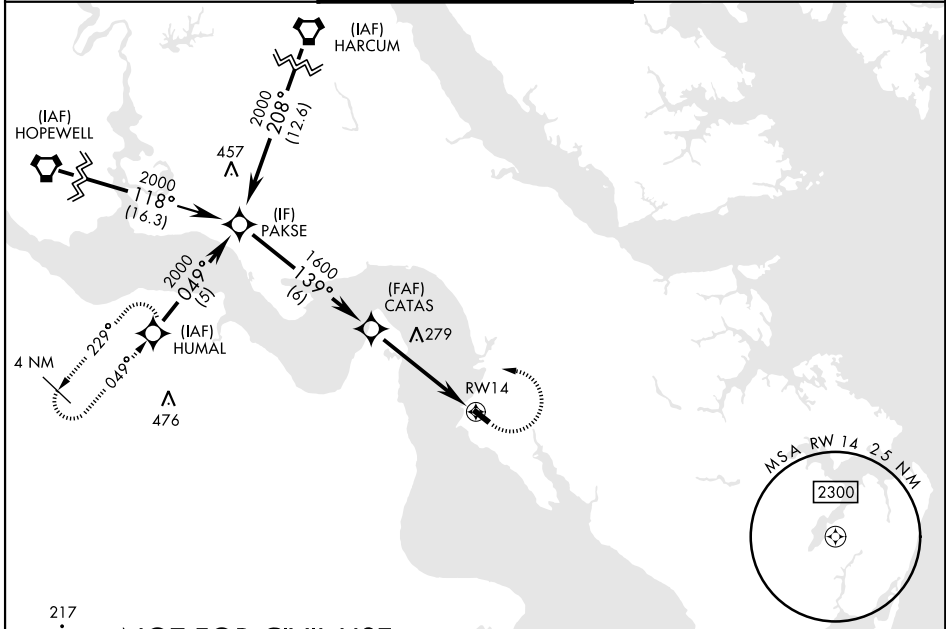
ODALS



MISSED APPROACH: Climbing left turn to 2000 direct HUMAL and hold.

Procedure NA at night.  
When local altimeter setting not received, use Newport News/Williamsburg Intl altimeter setting. Rwy 14 helicopter visibility reduction below 1 SM NA.

NORFOLK APP CON	TOWER ★	GND CON
125.7 335.625	126.3 (CTAF) 0 269.25	121.35 229.4



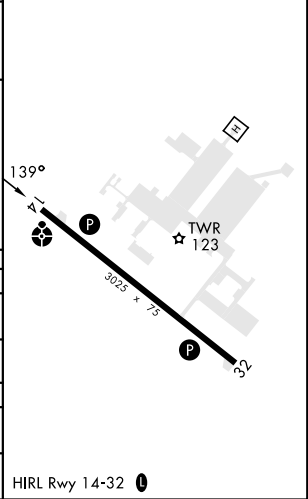
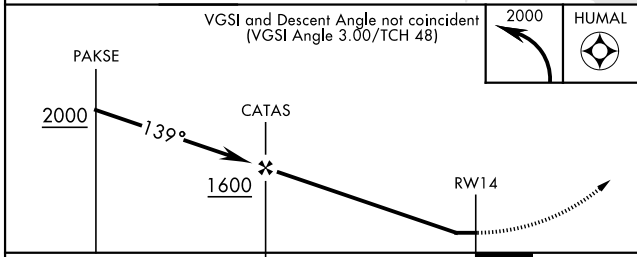
NE-3, 23 JAN 2025 to 20 FEB 2025

NE-3, 23 JAN 2025 to 20 FEB 2025

217

**NOT FOR CIVIL USE**

ELEV	12	TDZE	12
------	----	------	----



CATEGORY	A	B	C	D
RNAV MDA	480-1	468 (500-1)		NA
CIRCLING	480-1 468 (500-1)	560-1 548 (600-1)		NA
NEWPORT NEWS /WILLIAMSBURG INTL ALTIMETER				
RNAV MDA	500-1	488 (500-1)		NA
CIRCLING	500-1 488 (500-1)	580-1 568 (600-1)		NA

HIRL Rwy 14-32 0

# RNAV (GPS) RWY 14