

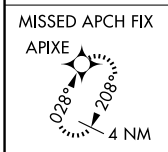
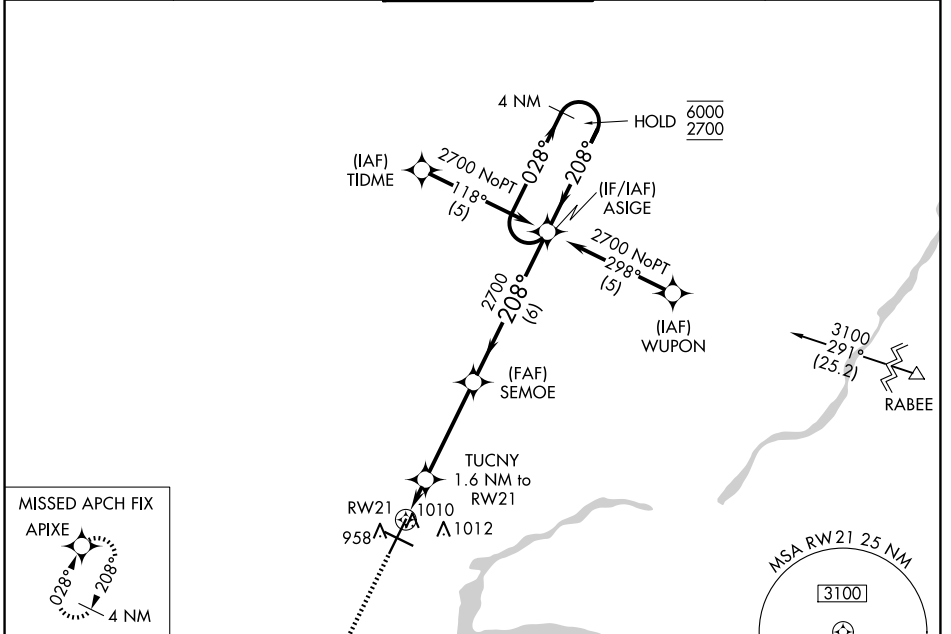
WAAS CH <b>93517</b> <b>W21A</b>	APP CRS <b>208°</b>	Rwy Idg TDZE Apt Elev	<b>8002</b> <b>879</b> <b>918</b>
--	------------------------	-----------------------------	---

# RNAV (GPS) RWY 21

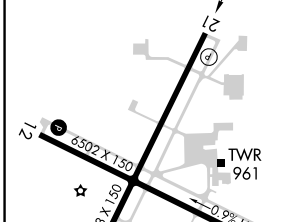
APPLETON INTL (ATW)

RNP APCH - GPS.		MISSED APPROACH: Climb to 2900 direct APIXE and hold.		
<p>▼ For uncompensated Baro-VNAV systems, ▲ LNAV/VNAV NA below -16°C or above 47°C.</p>				

ATIS <b>127.15</b>	GREEN BAY APP CON* <b>126.3 338.2</b>	APPLETON TOWER* <b>119.6(CTAF) 0</b>	GND CON <b>121.7</b>	UNICOM <b>122.95</b>
-----------------------	--	---	-------------------------	-------------------------



ELEV 918	<b>D</b>	TDZE 879
----------	----------	----------



2900	APIXE	VGSI and RNAV glidepath not coincident (VGSI Angle 3.00/TCH 47).	4 NM Holding Pattern
TUCNY 1.6 NM to RWY 21	SEMEOE	ASIGE	6000/2700
1440	2700	208°	GP 3.00° TCH 50
1.6	3.9 NM	6 NM	

CATEGORY	A	B	C	D
LPV DA		1129-3/4	250 (300-3/4)	
LNAV/VNAV DA		1261-1 1/8	382 (400-1 1/8)	
LNAV MDA	1280-1	401 (400-1)	1280-1 1/8	401 (400-1 1/8)
<b>C</b> CIRCLING	1340-1 422 (500-1)	1380-1 462 (500-1)	1400-1 1/2 482 (500-1 1/2)	1480-2 562 (600-2)

EC-3, 23 JAN 2025 to 20 FEB 2025

EC-3, 23 JAN 2025 to 20 FEB 2025