

VORTAC BGQ 112.5 Chan 72	APP CRS 096°	Rwy Idg TDZE Apt Elev	2450 162 162
---------------------------------------	------------------------	-----------------------------	---

VOR RWY 7

BIG LAKE (BGQ) (PAGQ)



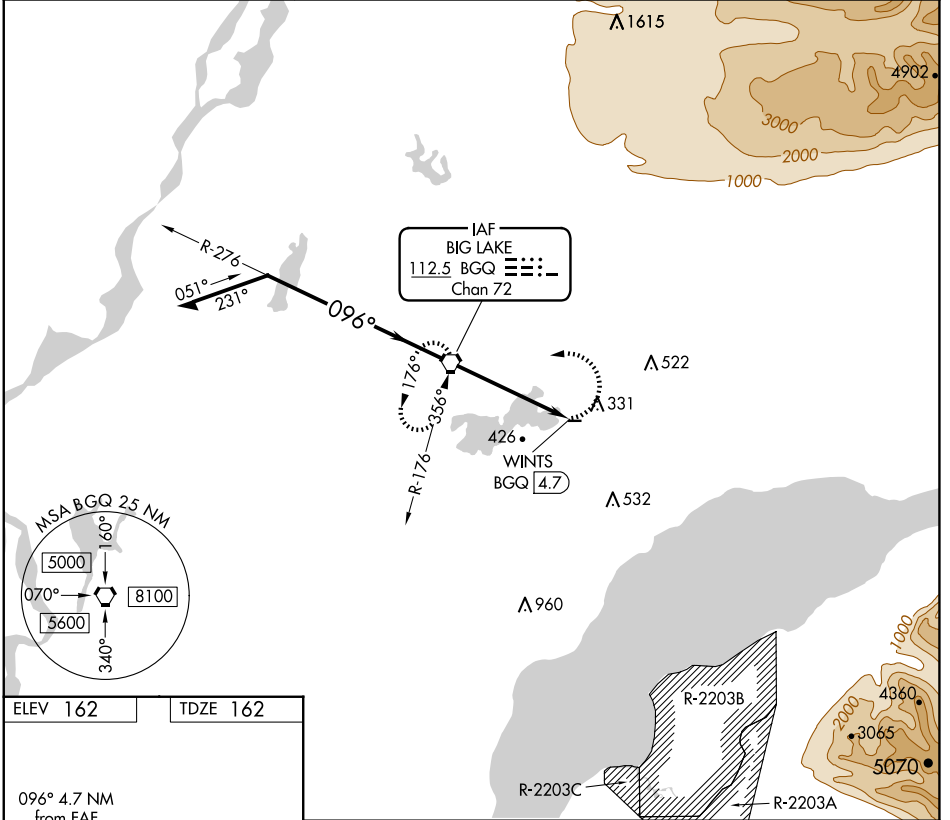
Procedure NA at night. Rwy 7 helicopter visibility reduction below 1 SM NA. Use Anchorage altimeter setting.

MISSED APPROACH: Climbing left turn to 2000 direct BGQ VORTAC and hold, climb-in-hold to 2000.

ANC ASOS
135.5

ANCHORAGE APP CON
118.6

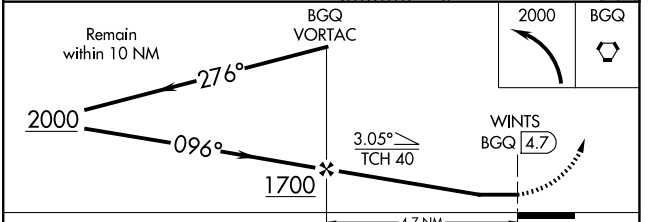
CTAF
122.80



AK, 26 DEC 2024 to 20 FEB 2025

AK, 26 DEC 2024 to 20 FEB 2025

ELEV 162	TDZE 162
----------	----------



MIRL Rwy 7-25

FAF to MAP 4.7 NM

Knots	60	90	120	150	180
Min:Sec	4:42	3:08	2:21	1:53	1:34

CATEGORY	A	B	C	D
S-7	980-1 818 (900-1)	980-1¼ 818 (900-1¼)	980-2½ 818 (900-2½)	NA
<input checked="" type="checkbox"/> CIRCLING	980-1¼	818 (900-1¼)	980-2½ 818 (900-2½)	NA