

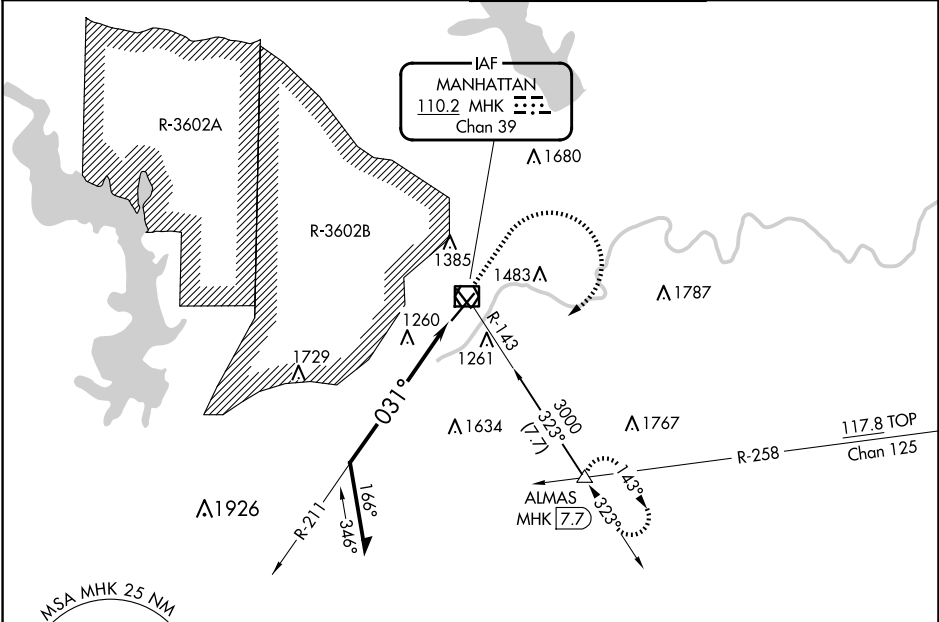
VOR/DME MHK <b>110.2</b> Chan <b>39</b>	APP CRS <b>031°</b>	Rwy Idg TDZE Apt Elev	<b>7030</b> <b>1057</b> <b>1066</b>
---	------------------------	-----------------------------	---

# VOR RWY 3

MANHATTAN RGNL (MHK)

DME required. ▼ Circling NA northwest of Rwy 3-21. For inop ALS, increase S-3 Cats C/D visibility to 2 1/2 SM. ▲	MALSR AS	MISSED APPROACH: Climb to 2000 then climbing right turn to 3000 on MHK VOR/DME R-143 to ALMAS INT/MHK 7.7 DME and hold.
--	-------------	---

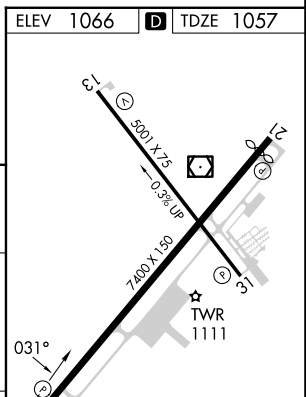
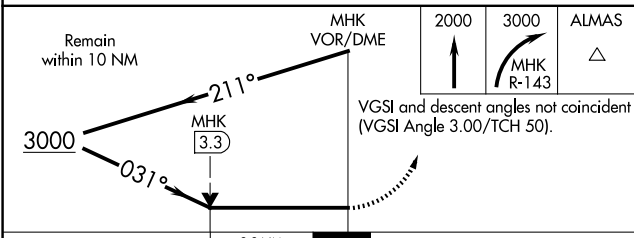
ASOS <b>119.075</b>	MARSHALL AAF GCA* <b>121.25 254.35</b>	MANHATTAN TOWER* <b>118.55 (CTAF) 0</b>	GND CON <b>121.85</b>
------------------------	---	--	--------------------------



NC-2, 23 JAN 2025 to 20 FEB 2025

NC-2, 23 JAN 2025 to 20 FEB 2025

ELEV 1066	TDZE 1057
-----------	-----------



CATEGORY	A	B	C	D
S-3	1840-1/2 783 (800-1/2)	1840-3/4 783 (800-3/4)	1840-1 3/4	783 (800-1 3/4)
CIRCLING	1840-1 774 (800-1)	1840-1 1/4 774 (800-1 1/4)	1920-2 1/2 854 (900-2 1/2)	1920-2 3/4 854 (900-2 3/4)

HIRL Rwy 3-21	▲
MRL Rwy 13-31	▲
REL Rws 21 and 31	▲