

LOC/DME I-CBE 110.5 Chan 42	APP CRS 228°	Rwy Idg TDZE Apt Elev	5047 775 775
--	------------------------	-----------------------------	---

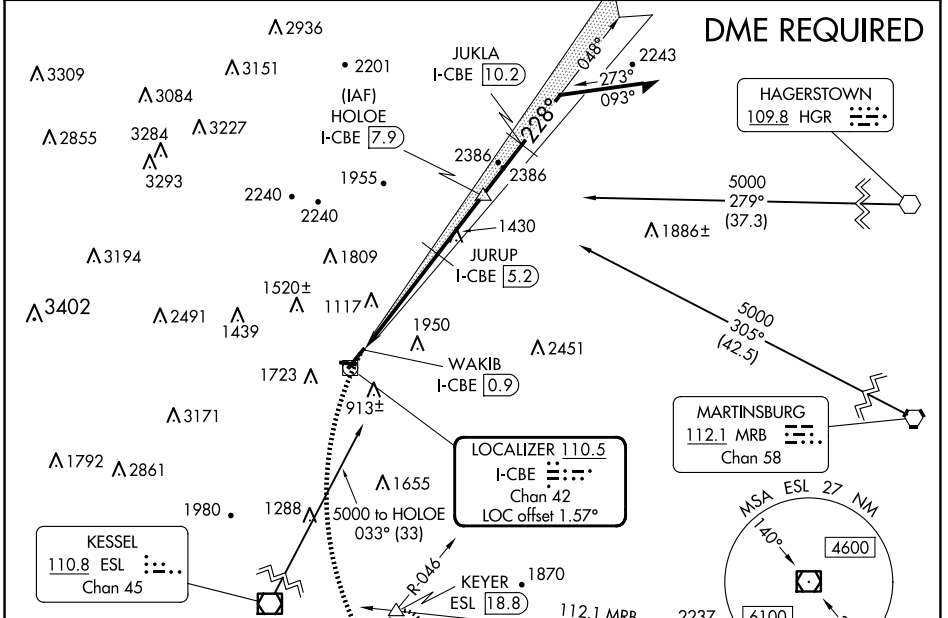
LOC/DME RWY 23

GREATER CUMBERLAND RGNL (CBE)

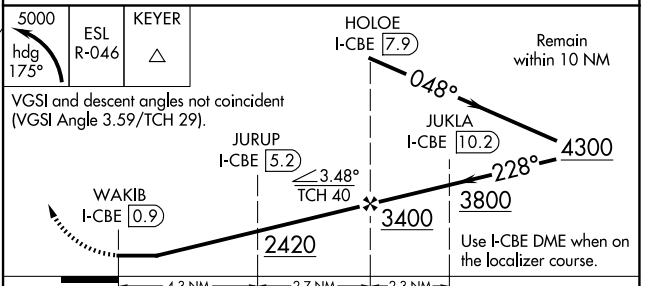
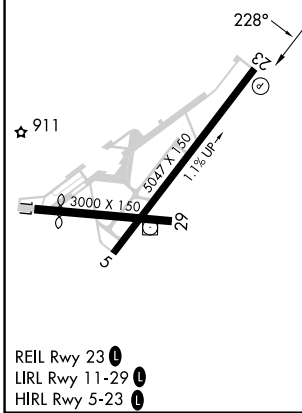
⚠ When local altimeter setting not received, use Winchester altimeter setting and increase all MDA 100 feet, increase S-23 Cat B visibility ¼ mile, Cats C and D ½ mile. Night landing: Rwy 5, 11, 29 NA. Circling NA northwest of Rwy 5/23. Helicopter visibility reduction below ¾ SM NA.

MISSED APPROACH: Climbing left turn to 5000 on heading 175° and on ESL VOR/DME R-046 to KEYER/ESL 18.8 DME and hold, continue climb-in-hold to 5000.

AWOS-3 128.625	JOHNSTOWN APP CON ★ 121.2 299.2	UNICOM 122.8 (CTAF) 0
--------------------------	---	---------------------------------



ELEV 775	TDZE 775
----------	----------



CATEGORY	A	B	C	D
S-23	1680-1¼	905 (1000-1¼)	1680-2½	905 (1000-2½)
C CIRCLING	1680-1¼ 905 (1000-1¼)	2140-1½ 1365 (1400-1½)	2260-3 1485 (1500-3)	2360-3 1585 (1600-3)

NE-3, 23 JAN 2025 to 20 FEB 2025

NE-3, 23 JAN 2025 to 20 FEB 2025