

RNAV (GPS) RWY 4

ORANGE COUNTY (MGJ)

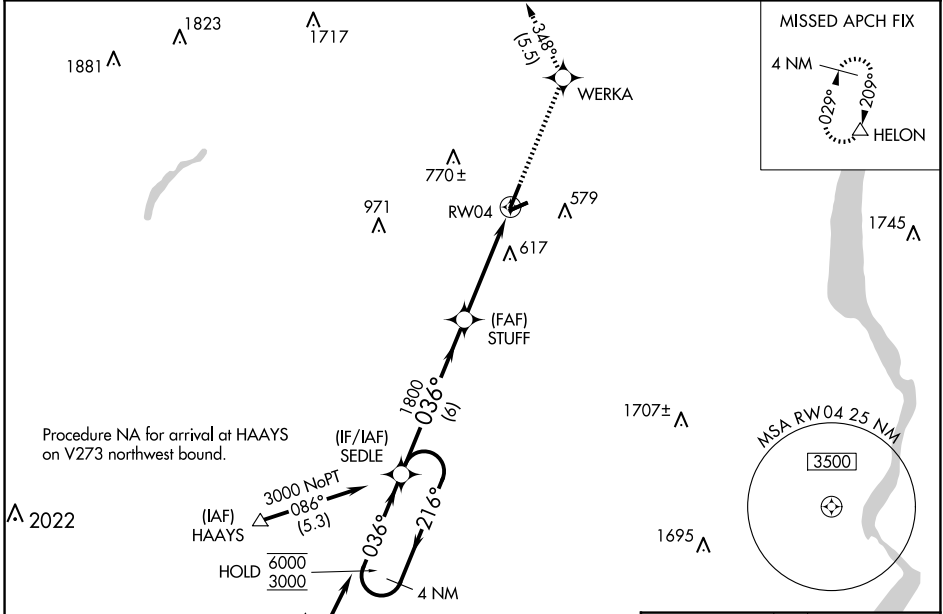
APP CRS 036°	Rwy Idg 5006
	TDZE 355
	Apt Elev 370

RNP APCH.

⚠ Circling Rwy 8, 22, 26 NA at night. Rwy 4 helicopter visibility reduction below 3/4 SM NA.

MISSED APPROACH: Climb to 5300 direct WERKA and on track 348° to HELON and hold. continue climb-in-hold to 5300.

ASOS 119.275	NEW YORK APP CON 132.75 363.1	CLNC DEL 123.85	AUNICOM 122.725 (CTAF) 0
------------------------	---	---------------------------	------------------------------------



Procedure NA for arrival at HAAYS on V273 northwest bound.

(IF/IAF) SEDLE

3000 NoPT 086° (5.3)

036° 216° 4 NM

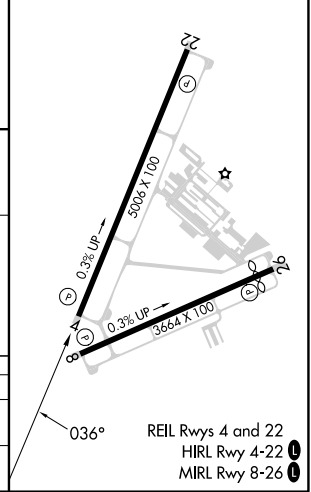
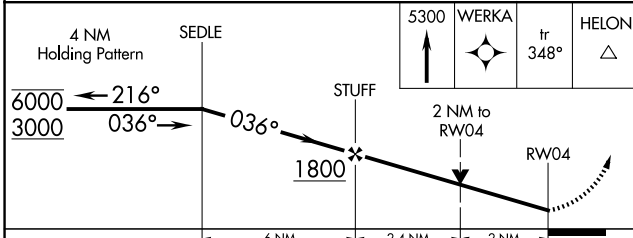
6000 3000 HOLD

3000 NoPT 040° (18.8)

(IAF) SPARTA SAX

Procedure NA for arrival on SAX VORTAC airway radials 311 CW 093.

ELEV 370	TDZE 355
----------	----------



CATEGORY	A	B	C	D
LNVA MDA	1060-1 705 (700-1)		1060-2 705 (700-2)	
C CIRCLING	1180-1 810 (900-1)		1180-2 1/4 810 (900-2 1/4)	1220-2 3/4 850 (900-2 3/4)

NE-2, 23 JAN 2025 to 20 FEB 2025

NE-2, 23 JAN 2025 to 20 FEB 2025