

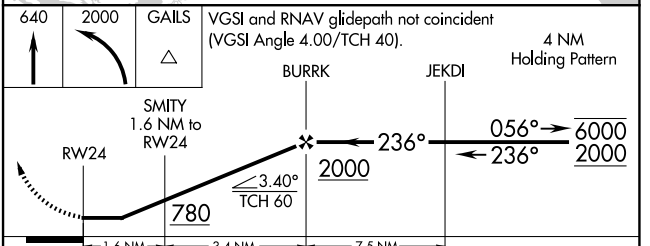
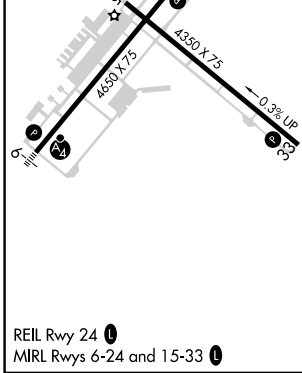
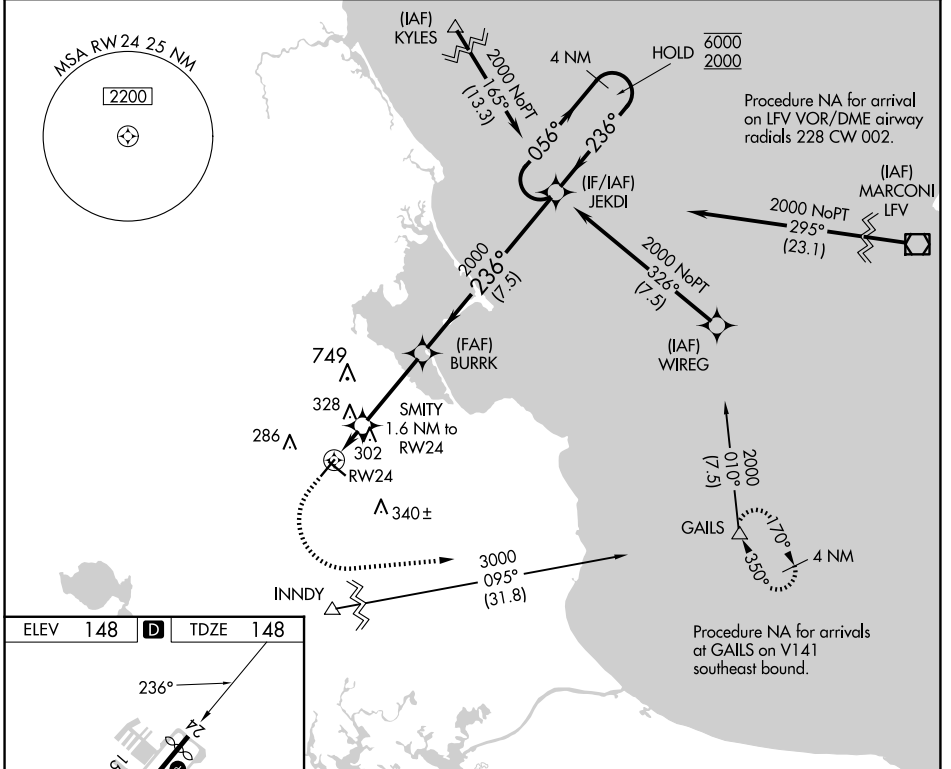
APP CRS	Rwy Idg	4350
236°	TDZE	148
	Apt Elev	148

RNAV (GPS) RWY 24

PLYMOUTH MUNI (PYM)

RNP APCH - GPS.		MISSED APPROACH: Climb to 640 then climbing left turn to 2000 direct GAILS and hold.	
<p>⚠ Rwy 24 helicopter visibility reduction below 1 SM NA. Circling Rwy 15 NA at night.</p>			

ASOS 135.625	BOSTON APP CON 118.2 284.6	CLNC DEL 127.75	UNICOM 122.725 (CTAF)	122.9 0
------------------------	--------------------------------------	---------------------------	---------------------------------	-----------------------



CATEGORY	A	B	C	D
LN AV MDA	580-1	432 (500-1)	580-1¼ 432 (500-1¼)	NA
C CIRCLING	620-1 472 (500-1)	640-1 492 (500-1)	760-1¾ 612 (700-1¾)	NA

NE-1, 23 JAN 2025 to 20 FEB 2025

NE-1, 23 JAN 2025 to 20 FEB 2025