

# RNAV (GPS) RWY 12

BAUDETTE INTL (BDE)

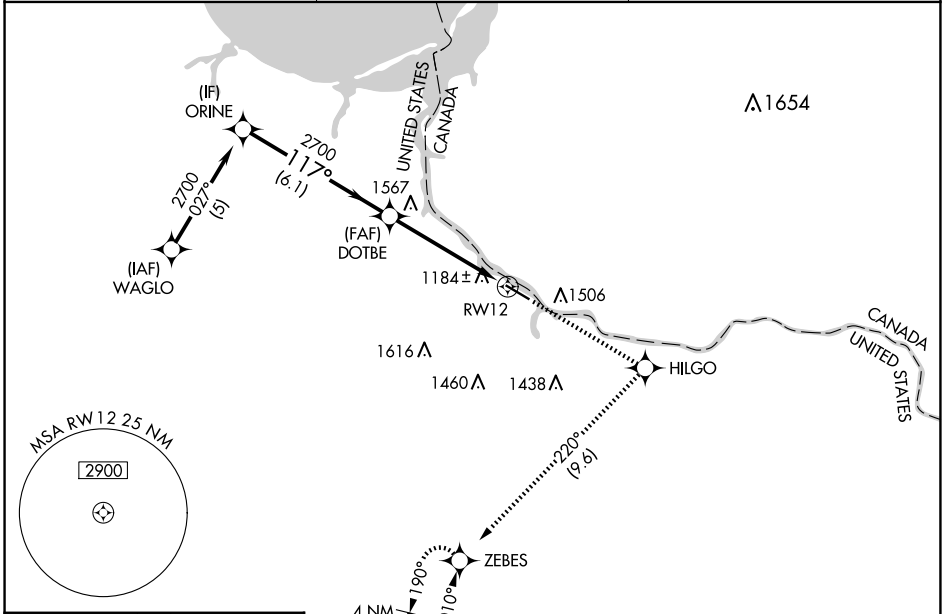
APP CRS <b>117°</b>	Rwy Idg <b>5498</b>
	TDZE <b>1085</b>
	Apt Elev <b>1085</b>

RNP APCH.

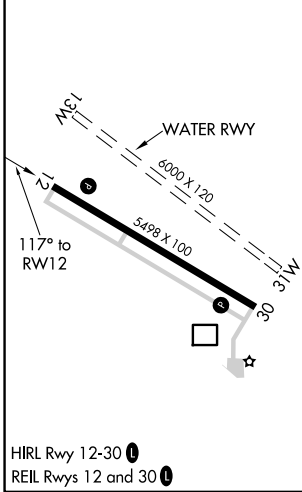
**▽** Rwy 12 helicopter visibility reduction below 3/4 SM NA.  
**▲** For uncompensated Baro-VNAV systems, LNAV/VNAV NA below -17°C or above 54°C.

MISSED APPROACH: Climb to 3000 direct HILGO and right turn on track 220° to ZEBES and hold.

ASOS <b>126.775</b>	MINNEAPOLIS CENTER <b>134.75 251.1</b>	UNICOM <b>122.8 (CTAF)</b>
------------------------	---	-------------------------------



ELEV 1085	TDZE 1085
-----------	-----------



	ORINE	DOTBE	3000	HILGO	ZEBES
	2700	2700	↑	✧	↻ tr 220°
	2700	117°			
		2700			
				*1.3 NM to RWY12	*LNAV only
GP 3.00°					
TCH 47					
			6.1 NM	3.6 NM	1.3 NM
CATEGORY	A	B	C	D	
LNAV/VNAV DA	1481-1½				396 (400-1½)
LNAV MDA	1560-1	475 (500-1)	1560-1¾ 475 (500-1¾)	1560-1½	475 (500-1½)

NC-1, 23 JAN 2025 to 20 FEB 2025

NC-1, 23 JAN 2025 to 20 FEB 2025