

WAAS CH 61217 W19A	APP CRS 194°	Rwy Idg TDZE Apt Elev	5701 937 956
--	------------------------	-----------------------------	---

RNAV (GPS) RWY 19

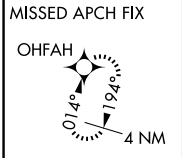
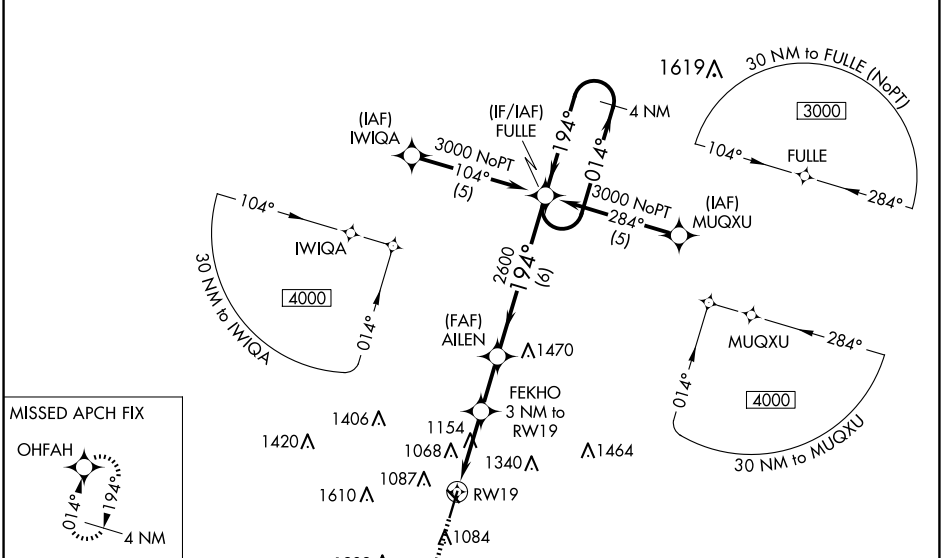
AMES MUNI (AMW)

RNP APCH - GPS.

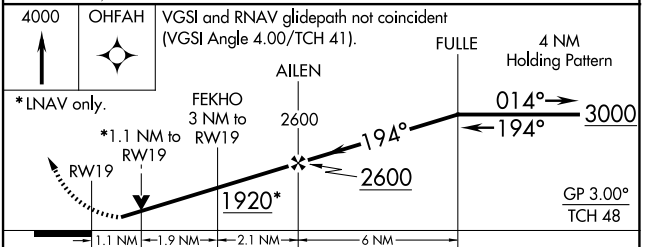
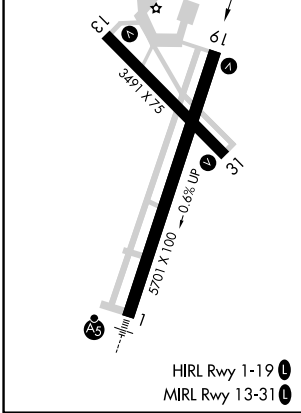
⚠ Baro-VNAV and VDP NA when using Ankeny altimeter setting. For uncompensated Baro-VNAV systems, LNAV/VNAV NA below -16°C or above 54°C. Rwy 19 helicopter visibility reduction below $\frac{3}{4}$ SM NA. When local altimeter setting not received, use Ankeny altimeter setting and increase LPV DA to 1239 feet and all visibilities $\frac{1}{2}$ SM. Increase LNAV/VNAV DA to 1434 feet; increase all MDAs 60 feet and LNAV visibility Cat C $\frac{1}{4}$ SM.

MISSED APPROACH:
Climb to 4000 direct OHFAH and hold.

ASOS 132.025	DES MOINES APP CON 123.9 307.15	CLNC DEL 126.0	UNICOM 122.7 (CTAF) 0
------------------------	---	--------------------------	---------------------------------



ELEV 956	TDZE 937
----------	----------



CATEGORY	A	B	C	D
LPV DA	1187-1 250 (300-1)			NA
LNAV/VNAV DA	1382-1 $\frac{3}{8}$ 445 (500-1 $\frac{3}{8}$)			NA
LNAV MDA	1420-1 483 (500-1)		1420-1 $\frac{3}{8}$ 483 (500-1 $\frac{3}{8}$)	

NC-3, 23 JAN 2025 to 20 FEB 2025

NC-3, 23 JAN 2025 to 20 FEB 2025