

WAAS CH <b>63033</b> <b>W17A</b>	APP CRS <b>169°</b>	Rwy Idg <b>3398</b> TDZE <b>455</b> Apt Elev <b>461</b>
--	------------------------	---

# RNAV (GPS) RWY 17

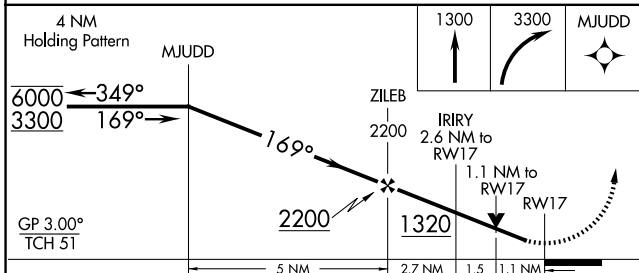
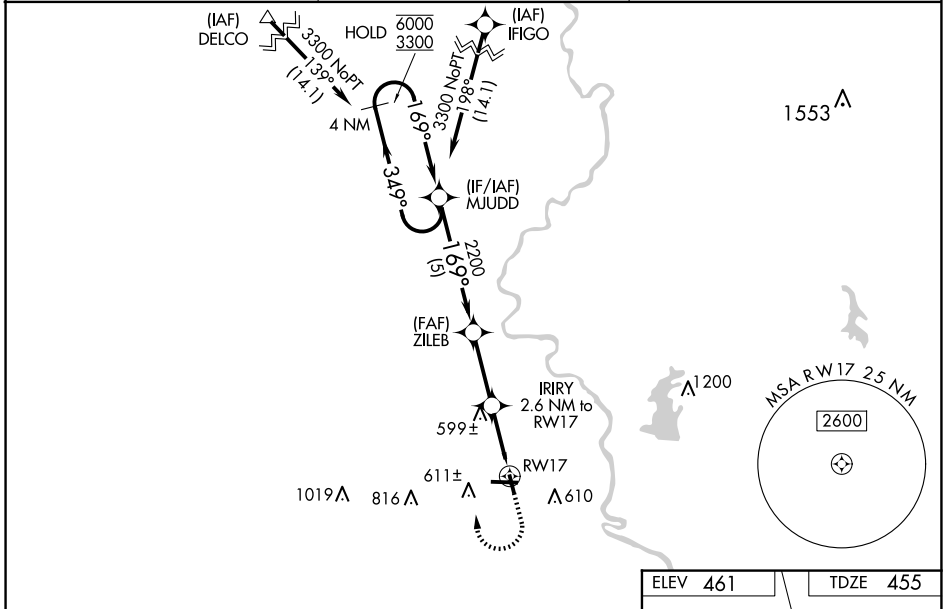
CRAWFORD COUNTY (RSV)

RNP APCH - GPS.

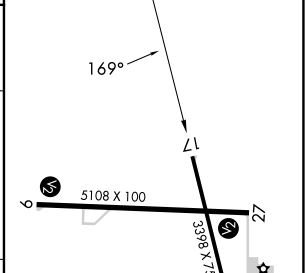
**▼** Rwy 17 helicopter visibility reduction below  $\frac{3}{4}$  SM NA.  
**▲** For uncompensated Baro-VNAV systems, LNAV/VNAV NA below -15°C or above 54°C.

MISSED APPROACH: Climb to 1300 then climbing right turn to 3300 direct MJUDD and hold.

AWOS-3 <b>120.50</b>	HULMAN APP CON <b>135.35 339.8</b>	UNICOM <b>123.0 (CTAF) 0</b>
-------------------------	---------------------------------------	---------------------------------



ELEV 461	TDZE 455
----------	----------



CATEGORY	A	B	C	D
LPV DA	734-1	279 (300-1)		NA
LNAV/VNAV DA	812-1 $\frac{1}{8}$	357 (400-1 $\frac{1}{8}$ )		NA
LNAV MDA	860-1	405 (400-1)	860-1 $\frac{1}{8}$ 405 (400-1 $\frac{1}{8}$ )	NA
<b>C</b> CIRCLING	940-1 479 (500-1)	1080-1 619 (700-1)	1120-1 $\frac{3}{4}$ 659 (700-1 $\frac{3}{4}$ )	NA

REIL Rwy 17, 9 and 27 **0**  
 MRL Rwy 9-27 and 17-35 **0**

EC-3, 23 JAN 2025 to 20 FEB 2025

EC-3, 23 JAN 2025 to 20 FEB 2025