

WAAS CH <b>87133</b> <b>W30A</b>	APP CRS <b>301°</b>	Rwy Idg TDZE <b>1338</b> Apt Elev <b>1339</b>	<b>5511</b>
----------------------------------------	------------------------	-----------------------------------------------------	-------------

# RNAV (GPS) RWY 30

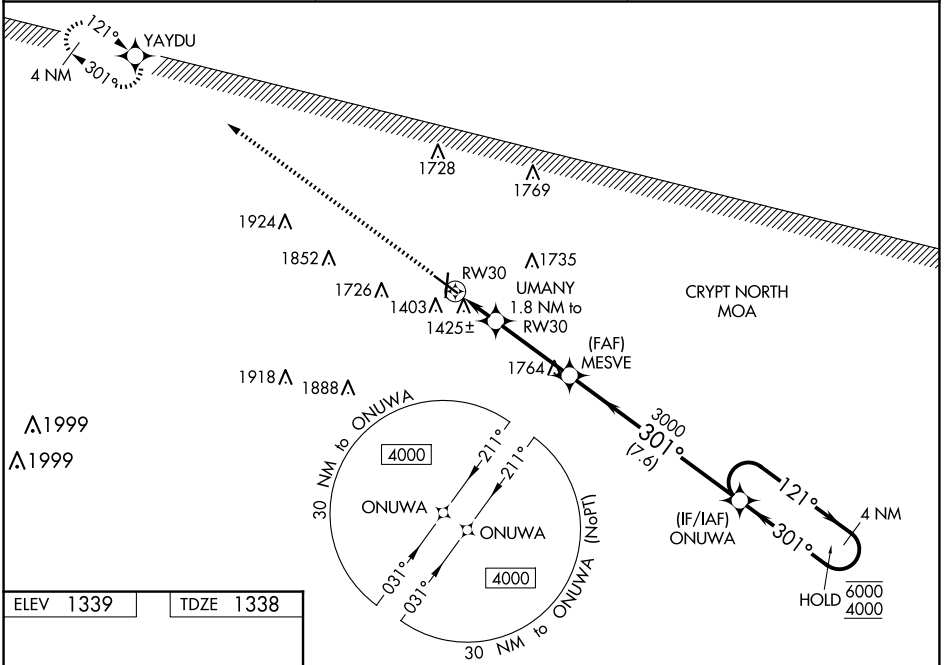
SPENCER MUNI (SPW)

RNP APCH-GPS.

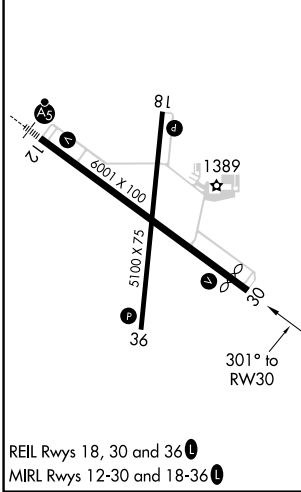
Baro-VNAV and VDP NA when using Estherville altimeter setting. For uncompensated Baro-VNAV systems, LNAV/VNAV NA below -20°C or above 54°C. When local altimeter setting not received, use Estherville altimeter setting: increase LPV DA to 1648 feet, LNAV/VNAV DA to 1683 feet and all visibilities 1/8 SM; increase all MDAs 60 feet and visibility Cats C and D 1/4 SM.

MISSED APPROACH: Climb to 4000 direct YAYDU and hold.

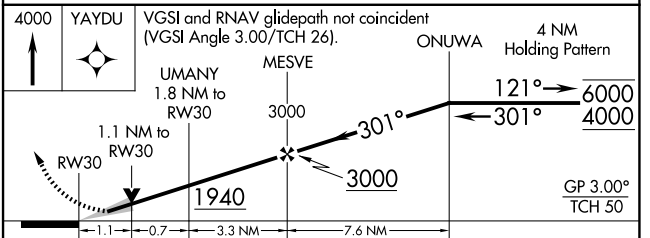
ASOS <b>126.625</b>	MINNEAPOLIS CENTER <b>127.75 257.7</b>	UNICOM <b>123.0 (CTAF) 0</b>
------------------------	-------------------------------------------	---------------------------------



ELEV <b>1339</b>	TDZE <b>1338</b>
------------------	------------------



REIL Rwy 18, 30 and 36  
MIRL Rwy 12-30 and 18-36



CATEGORY	A	B	C	D
LPV DA		1588 <sup>-3/4</sup>	250 (300 <sup>-3/4</sup> )	
LNAV/VNAV DA		1623 <sup>-7/8</sup>	285 (300 <sup>-7/8</sup> )	
LNAV MDA	1720-1	382 (400-1)	1720-1 <sup>1/8</sup>	382 (400-1 <sup>1/8</sup> )
CIRCLING	1760-1 421 (500-1)	1800-1 461 (500-1)	2100-2 <sup>1/4</sup> 761 (800-2 <sup>1/4</sup> )	2100-2 <sup>1/2</sup> 761 (800-2 <sup>1/2</sup> )

NC-3, 23 JAN 2025 to 20 FEB 2025

NC-3, 23 JAN 2025 to 20 FEB 2025