

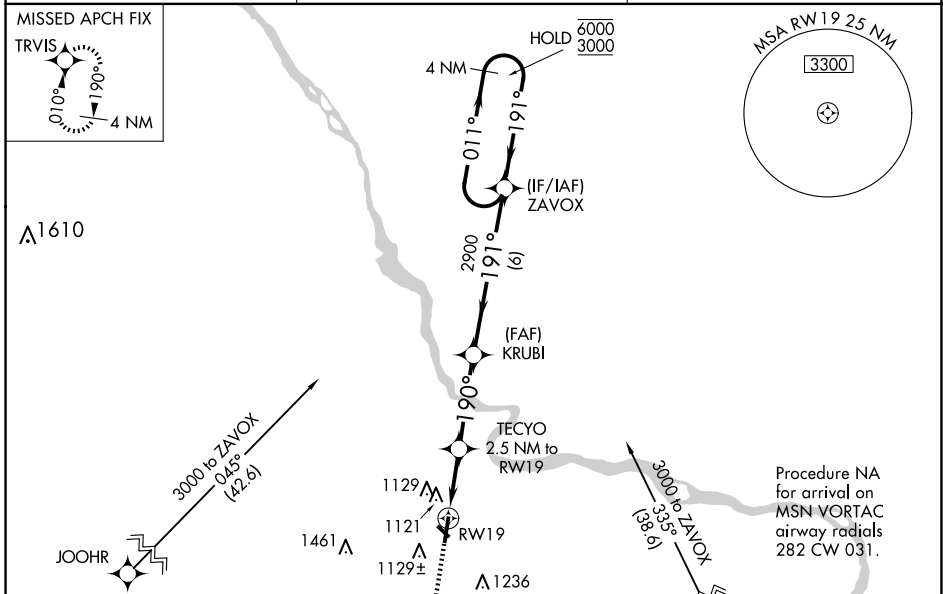
WAAS CH <b>78232</b> <b>W19A</b>	APP CRS <b>190°</b>	Rwy Idg TDZE Apt Elev	<b>5010</b> <b>979</b> <b>979</b>
--	------------------------	-----------------------------	---

# RNAV (GPS) RWY 19

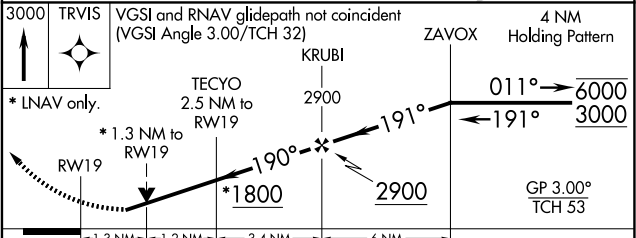
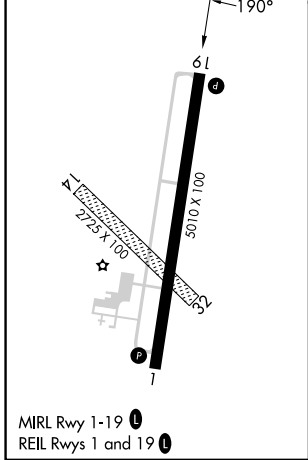
BARABOO/WISCONSIN DELLS RGNL (DLL)

RNP APCH.	<p><b>▽</b> Circling NA to Rws 14 and 32.  <b>⚠</b> Rwy 19 helicopter visibility reduction below ¾ SM NA.                  For uncompensated Baro-VNAV systems, LNAV/VNAV NA below -16°C or above 54°C.</p>	MISSED APPROACH: Climb to 3000 direct TRVIS and hold.
-----------	---	--

AWOS-3 <b>118.325</b>	MADISON APP CON ★ <b>135.45 343.7</b>	UNICOM <b>123.05 (CTAF) 0</b>
--------------------------	--	----------------------------------



ELEV 979	TDZE 979
----------	----------



CATEGORY	A	B	C	D
LPV DA	1341-1		362 (400-1)	NA
LNAV/VNAV DA	1302-1		323 (400-1)	NA
LNAV MDA	1420-1	441 (500-1)	1420-1 3/8 441 (500-1 3/8)	NA
<b>☑</b> CIRCLING	1520-1	541 (600-1)	1580-1 3/4 601 (700-1 3/4)	NA

EC-3, 23 JAN 2025 to 20 FEB 2025

EC-3, 23 JAN 2025 to 20 FEB 2025