

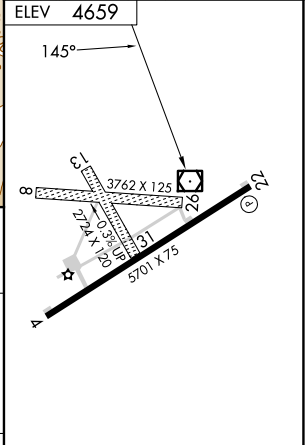
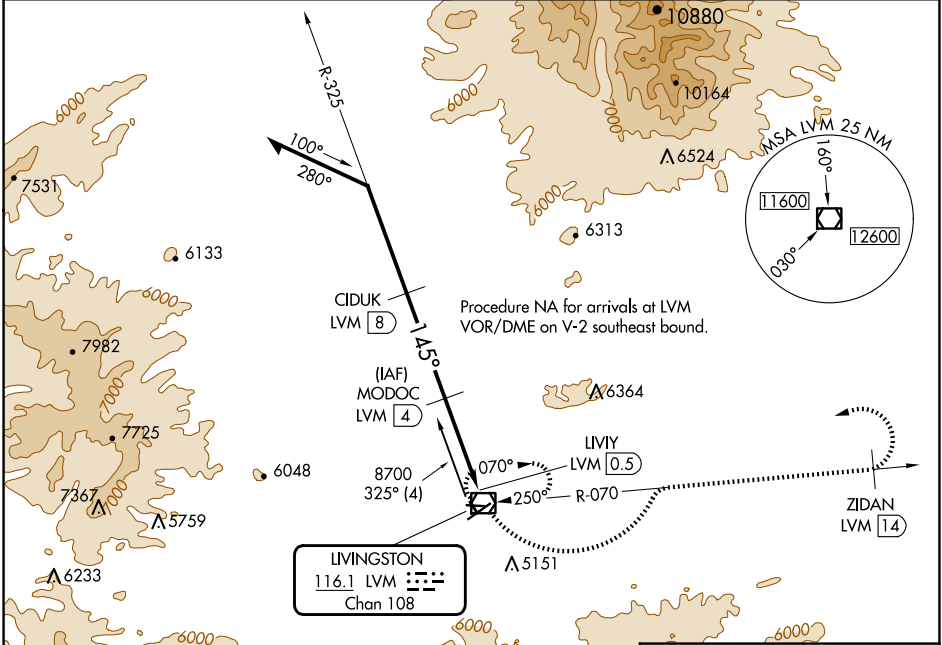
VOR/DME LVM <b>116.1</b> Chan <b>108</b>	APP CRS <b>145°</b>	Rwy Idg TDZE Apt Elev <b>4659</b>	<b>N/A</b> <b>N/A</b>
--	------------------------	--	--------------------------

# VOR/DME-B MISSION FLD (LVM)

**⚠** Circling NA for Cats C southeast of Rwy 4-22.  
**⚠** Circling NA to Rwy 8-26 and 13-31.  
**⚠** -29°C

**MISSED APPROACH:** Climbing left turn to 9900 via LVM VOR/DME R-070 to ZIDAN/14 DME and left turn direct LVM VOR/DME and hold.

ASOS <b>135.275</b>	BIG SKY APP CON ★ <b>119.55 235.775</b>	UNICOM <b>123.0 (CTAF)</b>
------------------------	--	-------------------------------



Remain within 12 NM	MODOC LVM <b>4</b>	9900 LVM R-070	ZIDAN LVM <b>14</b>	LVM
8700	CIDUK LVM <b>8</b>	7400	LIVY LVM <b>0.5</b>	
4 NM		3.5 NM		

CATEGORY	A	B	C	D
CIRCLING	5540-1¼	881 (900-1¼)	5540-2¾ 881 (900-2¾)	NA

REIL Rwy 22  
MIRL Rwy 4-22

NW-1, 23 JAN 2025 to 20 FEB 2025

NW-1, 23 JAN 2025 to 20 FEB 2025