

APP CRS	Rwy Idg	N/A
180°	TDZE	N/A
	Apt Elev	329

RNAV (GPS)-A
BRUNSWICK COUNTY (LVL)

RNP APCH.

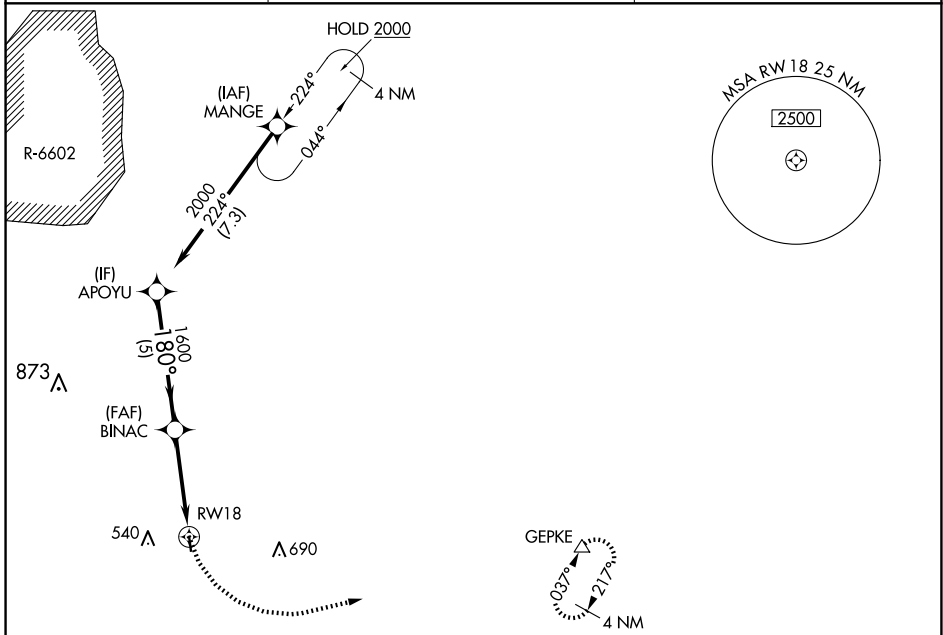
▼ Procedure NA at night. Helicopter visibility reduction below 1 SM NA. When local altimeter setting not received, use South Hill altimeter setting and increase all MDA 60 feet.
▲

MISSED APPROACH: Climbing left turn to 4000 direct GEPKE and hold, continue climb-in-hold to 4000.

AWOS-3
119.625

WASHINGTON APP CON
118.75 377.1

UNICOM
122.8 (CTAF)



NE-3, 23 JAN 2025 to 20 FEB 2025

NE-3, 23 JAN 2025 to 20 FEB 2025

