

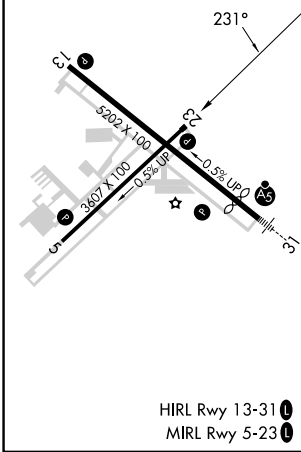
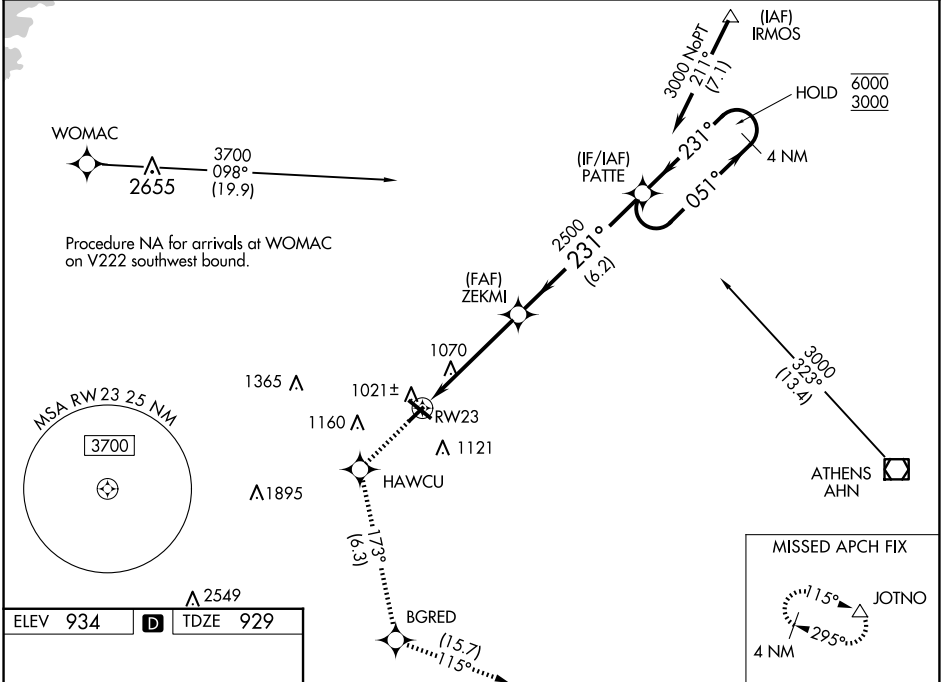
WAAS CH 82516 W23A	APP CRS 231°	Rwy Idg TDZE Apt Elev	3607 929 934
--	------------------------	-----------------------------	---

RNAV (GPS) RWY 23

BARROW COUNTY (WDR)

RNP APCH.	MISSED APPROACH: Climb to 3000 direct HAWCU and on track 173° to BGRED and on track 115° to JOTNO and hold.
-----------	---

AWOS-3 118.575	ATLANTA APP CON * 132.475 291.1	UNICOM 123.0 (CTAF)
--------------------------	---	-------------------------------



	3000	HAWCU	tr 173°	BGRED	tr 115°	JOTNO	PATTE	4 NM Holding Pattern
		RW23		ZEKMI	2500		051° → 6000 ← 231° 3000	GP 3.00° TCH 40
			4.8 NM		6.2 NM			
CATEGORY	A	B	C	D				
LPV DA		1179-1	250 (300-1)					
LNAV/VNAV DA		1274-1	345 (400-1)					
LNAV MDA	1320-1	391 (400-1)	1320-1½	391 (400-1½)				
CIRCLING	1400-1 466 (500-1)	1580-1 646 (700-1)	1660-2 726 (800-2)	1660-2¼ 726 (800-2¼)				

SE-4, 23 JAN 2025 to 20 FEB 2025

SE-4, 23 JAN 2025 to 20 FEB 2025