

WAAS CH <b>61104</b> <b>W04A</b>	APP CRS <b>037°</b>	Rwy Idg TDZE Apt Elev	<b>6800</b> <b>744</b> <b>755</b>
--	------------------------	-----------------------------	---

# RNAV (GPS) RWY 4

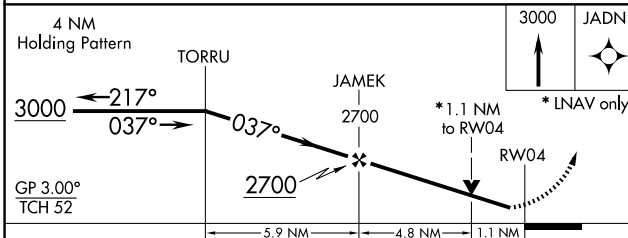
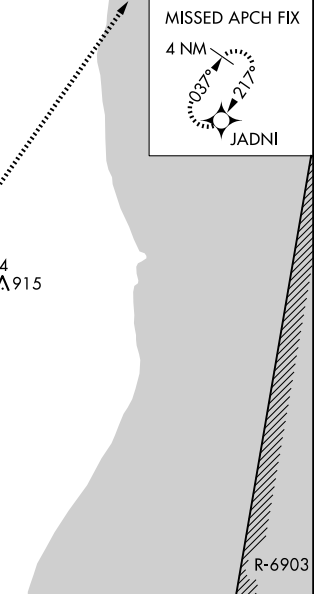
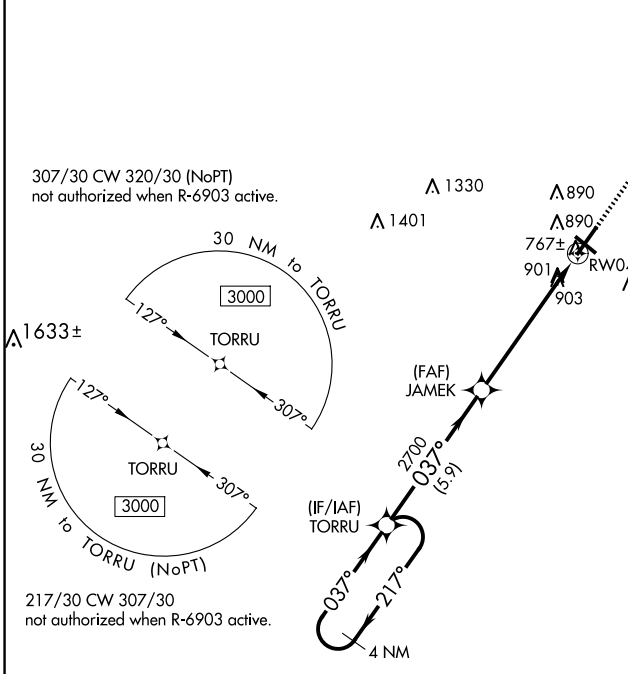
SHEBOYGAN COUNTY MEML INTL (SBM)

RNP APCH.

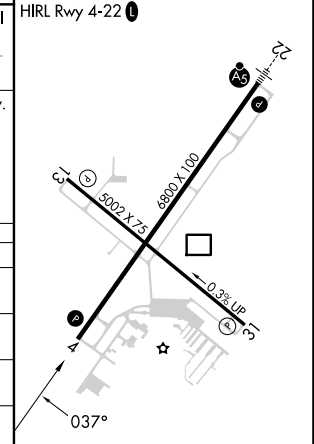
▼ For uncompensated Baro-VNAV systems, LNAV/VNAV NA below -23°C or above 54°C. Rwy 4 helicopter visibility reduction below ¾ SM NA.

MISSED APPROACH: Climb to 3000 direct JADNI and hold.

ASOS <b>118.425</b>	MILWAUKEE APP CON <b>127.375 263.075</b>	GCO <b>121.725</b>	CLNC DEL <b>127.375</b>	UNICOM <b>122.7 (CTAF) 0</b>
------------------------	---	-----------------------	----------------------------	---------------------------------



ELEV <b>755</b>	TDZE <b>744</b>
-----------------	-----------------



CATEGORY	A	B	C	D
LPV DA		994-1	250 (300-1)	
LNAV/VNAV DA		1193-1½	449 (500-1½)	
LNAV MDA	1160-1	416 (500-1)	1160-1½	416 (500-1½)
CIRCLING	1200-1 445 (500-1)	1220-1 465 (500-1)	1240-1½ 485 (500-1½)	1360-2 605 (700-2)

# RNAV (GPS) RWY 4

EC-3, 23 JAN 2025 to 20 FEB 2025

EC-3, 23 JAN 2025 to 20 FEB 2025