

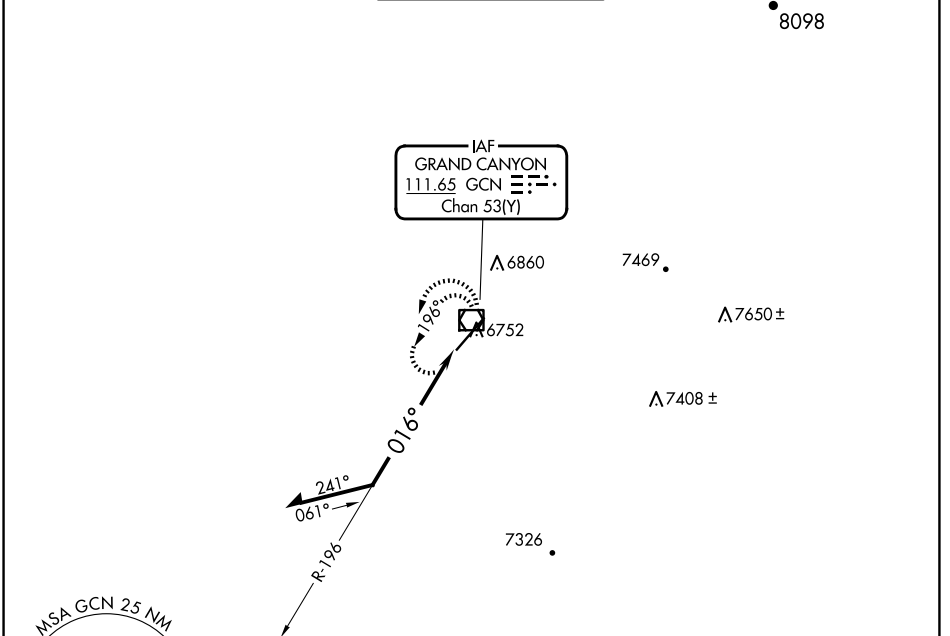
VOR/DME GCN 111.65 Chan 53(Y)	APP CRS 016°	Rwy Idg 8999 TDZE 6556 Apt Elev 6609
---	------------------------	---

VOR RWY 3

GRAND CANYON NTL PARK (GCN)

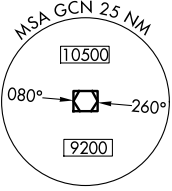
▽ ▲ Rwy 3 helicopter visibility reduction below ¾ SM NA.	MISSED APPROACH: Climb to 9100 in GCN VOR/DME holding pattern.
---	--

ATIS 124.3	LOS ANGELES CENTER 124.85 319.2	CANYON TOWER* 119.0 (CTAF) 0	GND CON 121.9	UNICOM 122.95
----------------------	---	--	-------------------------	-------------------------



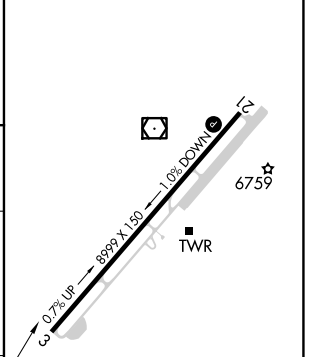
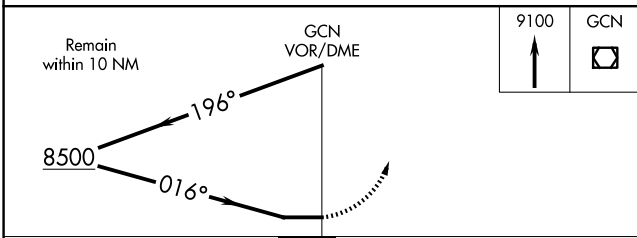
SW-4, 23 JAN 2025 to 20 FEB 2025

SW-4, 23 JAN 2025 to 20 FEB 2025



Descend in GCN VOR/DME holding pattern to 11000 before commencing procedure turn.

ELEV 6609	D TDZE 6556
-----------	--------------------



CATEGORY	A	B	C	D
S-3	7180-1	624 (600-1)	7180-1¾	624 (600-1¾)
C CIRCLING	7180-1 571 (600-1)	7200-1 591 (600-1)	7280-2 671 (700-2)	7620-3 1011 (1100-3)

REIL Rwy 21
MIRL Rwy 3-21