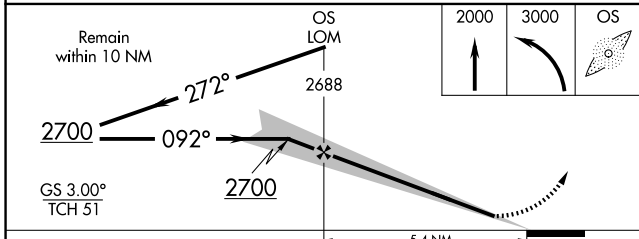
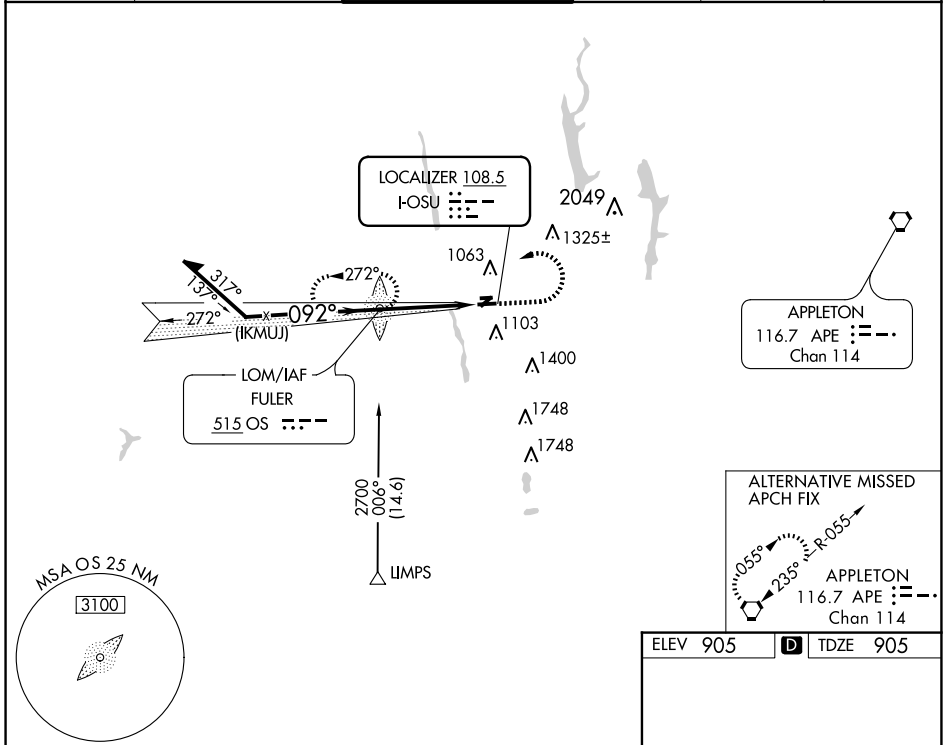


LOC I-OSU 108.5	APP CRS 092°	Rwy Idg TDZE Apt Elev	5004 905 905
---------------------------	------------------------	-----------------------------	---

ILS or LOC RWY 9R

OHIO STATE UNIVERSITY (OSU)

ADF required for procedure entry. ADF required.		MALSR		MISSED APPROACH: Climb to 2000 then climbing left turn to 3000 direct FULER LOM and hold.	
<p>⚠ When local altimeter setting not received, use John Glenn Columbus Intl altimeter setting; increase DA to 1140 feet; increase all MDAs 40 feet and S-9R visibility Cat C ½ SM and Cat D and Circling Cat D ¼ SM. Circling Rwy 23 NA at night.</p>					
ATIS 121.35	COLUMBUS APP CON 125.95 317.775	STATE TOWER ★ 118.8 (CTAF) 254.325	GND CON 121.7	CLNC DEL 121.7	UNICOM 122.95



ELEV 905	D TDZE 905
REIL Rwy 27L HIRL Rwy 9R-27L MIRL Rwys 9L-27R	
FAF to MAP 5.4 NM	
Knots	60 90 120 150 180
Min:Sec	5:24 3:36 2:42 2:10 1:48

EC-2, 23 JAN 2025 to 20 FEB 2025

EC-2, 23 JAN 2025 to 20 FEB 2025