

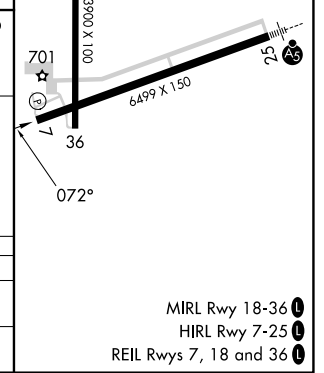
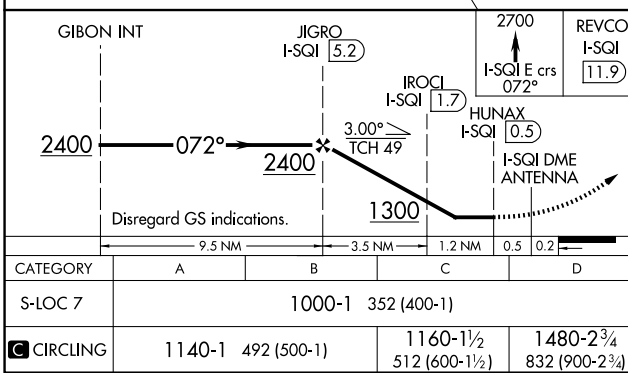
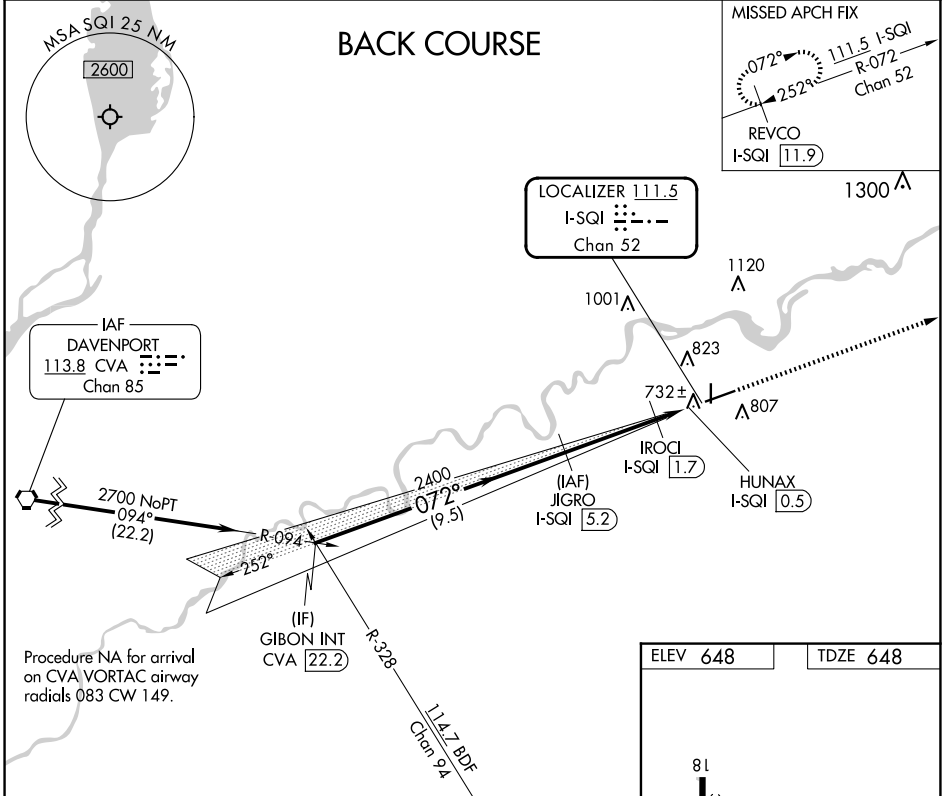
LOC/DME I-SQI 111.5 Chan 52	APP CRS 072°	Rwy ldg 6499 TDZE 648 Apt Elev 648
---	------------------------	---

LOC BC RWY 7

WHITESIDE COUNTY/JOS H BITTORF FLD (SQI)

DME required.		MISSED APPROACH: Climb to 2700 on I-SQI localizer east course 072° to REVCO/I-SQI 11.9 DME and hold.
<p>▼ NA Rwy 7 helicopter visibility reduction below ¾ SM NA.</p>		

AWOS-3PT 119.175	ROCKFORD APP CON 126.0 327.0	CLNC DEL 128.0	UNICOM 123.0 (CTAF) 0
----------------------------	--	--------------------------	---------------------------------



STERLING/ROCKFALLS, ILLINOIS Amdt 7 25JAN24	WHITESIDE COUNTY/JOS H BITTORF FLD (SQI) LOC BC RWY 7
--	---

MIRL Rwy 18-36
HIRL Rwy 7-25
REIL Rws 7, 18 and 36